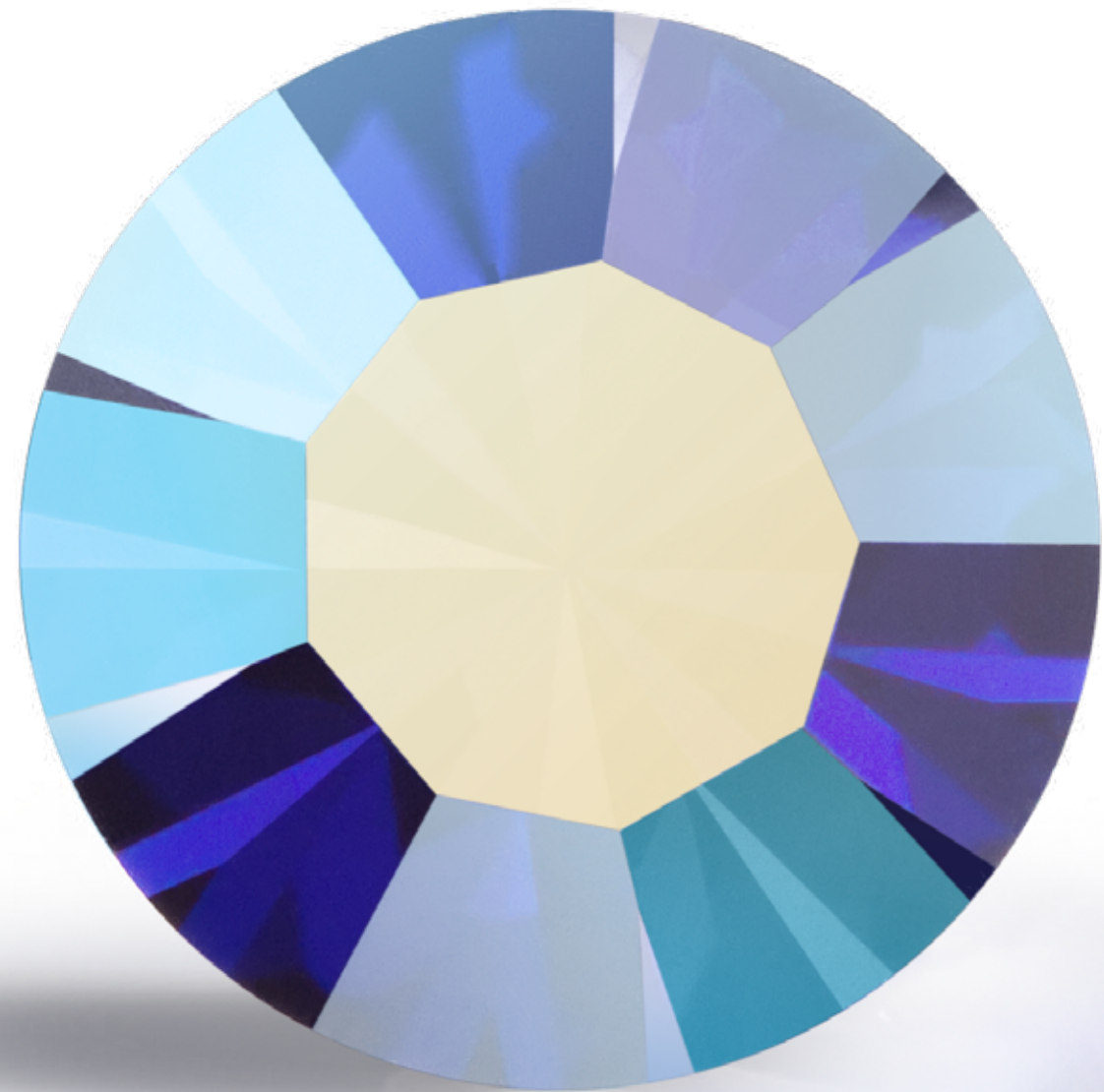


# The Sustainable World of Preciosa



PRECIOSA



# Contents

CEO Foreword	3
1. Introduction: The Crystal World of Preciosa	4
2. Origin: Crystal Comes to Life	8
3. Creation: Crystal Becomes Value	16
4. Form: Crystal Takes Shape	22
5. Light: Crystal Brings Light	33
6. Reflection: Crystal Reflected in Society	38
7. Appendix: Crystal Endures	47
List of Abbreviations (Alphabetical Order)	51

# Dear Readers,



Each year reaffirms that sustainability is no longer an optional aspect of business, but a fundamental part of it. At Preciosa, this is doubly true. Our production is built on raw materials whose origin and processing require the highest level of care and responsibility. Responsible manufacturing is therefore one of the pillars of our identity. We do not see it as a trend or an add-on, but as a fundamental necessity embedded in every decision we make.

In recent years, we have achieved significant progress: reducing our carbon footprint, improving water and energy efficiency, and strengthening cooperation with local suppliers. Every one of these steps is the result of the daily efforts of hundreds of people across our production sites. We draw on the tradition of Northern Bohemia, where modern glass cutting was born centuries ago and where our entire production cycle still takes place today. This continuity enables us to maintain exceptional quality standards, retain full control over our resources, and reduce emissions associated with transportation and energy consumption. At the same time, it challenges us to continuously innovate, seek more efficient and environmentally considerate technologies, and explore how our production can become even more circular.

Our approach to customers is equally important to us. We believe that product quality begins with the quality of relationships. Just as we strive to be a good neighbor in the region where we operate, we also strive to be a reliable partner our customers can depend on. Our ESG strategy is therefore not separate from our market activities. It is reflected in every product leaving our production lines and in every decision we make together with our clients and suppliers.

This report summarizes our activities in environmental stewardship, social responsibility, and corporate governance, from energy efficiency and recycling to employee care, occupational safety, community development, and transparent governance. It reflects how far we have progressed, while also acknowledging the path ahead. ESG is not a one-time project; it is a journey. A journey we are committed to pursuing responsibly, openly, and with a long-term perspective.

I would like to thank everyone who contributes to this journey: our employees, partners, customers, and the communities in our region. Without your dedication and cooperation, Preciosa could not be what it is today: a trusted partner and a brand whose brilliance is built on sustainability.

Jan Štiller, MBA, CEO, Preciosa

CHAPTER 1

# Introduction: The Crystal World of Preciosa



The desire to create has accompanied humankind since the beginning of time. Fire, once essential for survival, became a tool of transformation. Through fire, people began turning natural materials into something beautiful and new. This gave rise to glassmaking, a craft that for centuries has revealed the hidden essence of raw materials and transformed them into creations that are both delicate and enduring.

The deep forests of the Jizera Mountains and the landscape of the Bohemian Paradise provided local glassmakers with everything they needed: pure silica sand, wood, and water from mountain streams. It was here, in Northern Bohemia, that the first glassworks were established, giving birth to the tradition of so-called “forest glass,” whose subtly greenish hue reflected the local raw materials and melting techniques. This symbiosis of nature and craftsmanship laid the foundation for a tradition that radiated from the region across Europe.

In the 17th and 18th centuries, this region introduced a groundbreaking innovation to the world of glassmaking. It was in the area around present-day Jablonec nad Nisou and Liberec, within the Crystal Valley, that modern glass cutting was born. Local masters succeeded in combining clear crystal glass with new techniques of hand cutting, engraving, and later mechanical processing. The result was exceptionally brilliant stones whose precision and craftsmanship surpassed Venetian glass and laid the foundations for the worldwide reputation of Bohemian crystal and the region’s jewelry-making tradition.

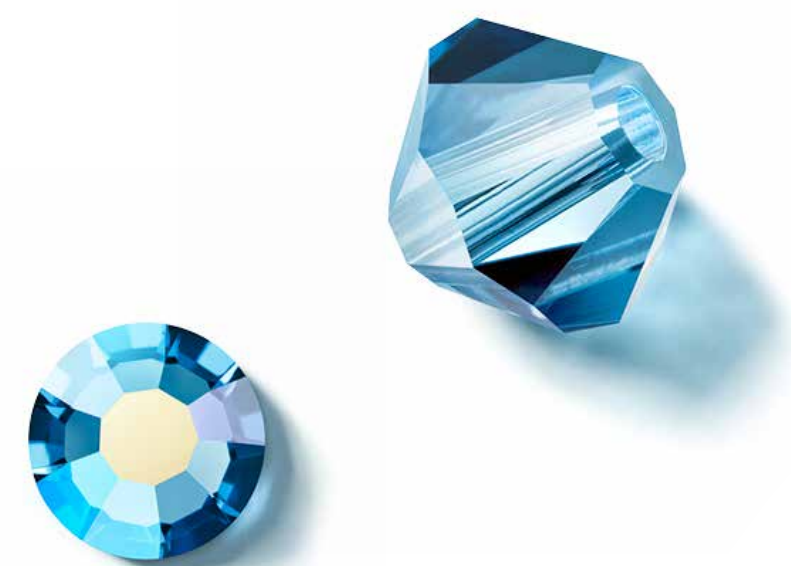


# A Tradition That Endures

PRECIOSA, a.s. (hereinafter referred to as Preciosa) builds upon this historic legacy. Headquartered in Jablonec nad Nisou, the company is a natural continuation of the North Bohemian glassmaking tradition in its modern, technologically advanced form. Preciosa is part of the Preciosa Group, with NLT, a.s. serving as its sole shareholder and parent company.

The company's core business activities include the development, production, and sale of crystal components, particularly precision-cut crystals, beads, and other glass elements with high added value for the fashion and design industries. The product portfolio also includes fine jewelry stones made from cubic zirconia and other materials, as well as application services focused on processing these components and applying them to final products.

The company also operates its own Machinery division, responsible for the development and production of industrial machinery, equipment, and glassmaking molds for both internal use and external customers.



# ESG Reporting

We consider transparent and accessible business information essential for all our stakeholders. Our ESG reporting is conducted on a voluntary basis.

This document reflects the key principles of the CSRD framework, particularly in the areas of double materiality assessment and the disclosure of selected data. The presented data relates to fiscal year 2025 (April 1, 2024 – March 31, 2025), and each sustainability aspect reflects our approach to the product lifecycle, from raw materials to its final and enduring beauty.

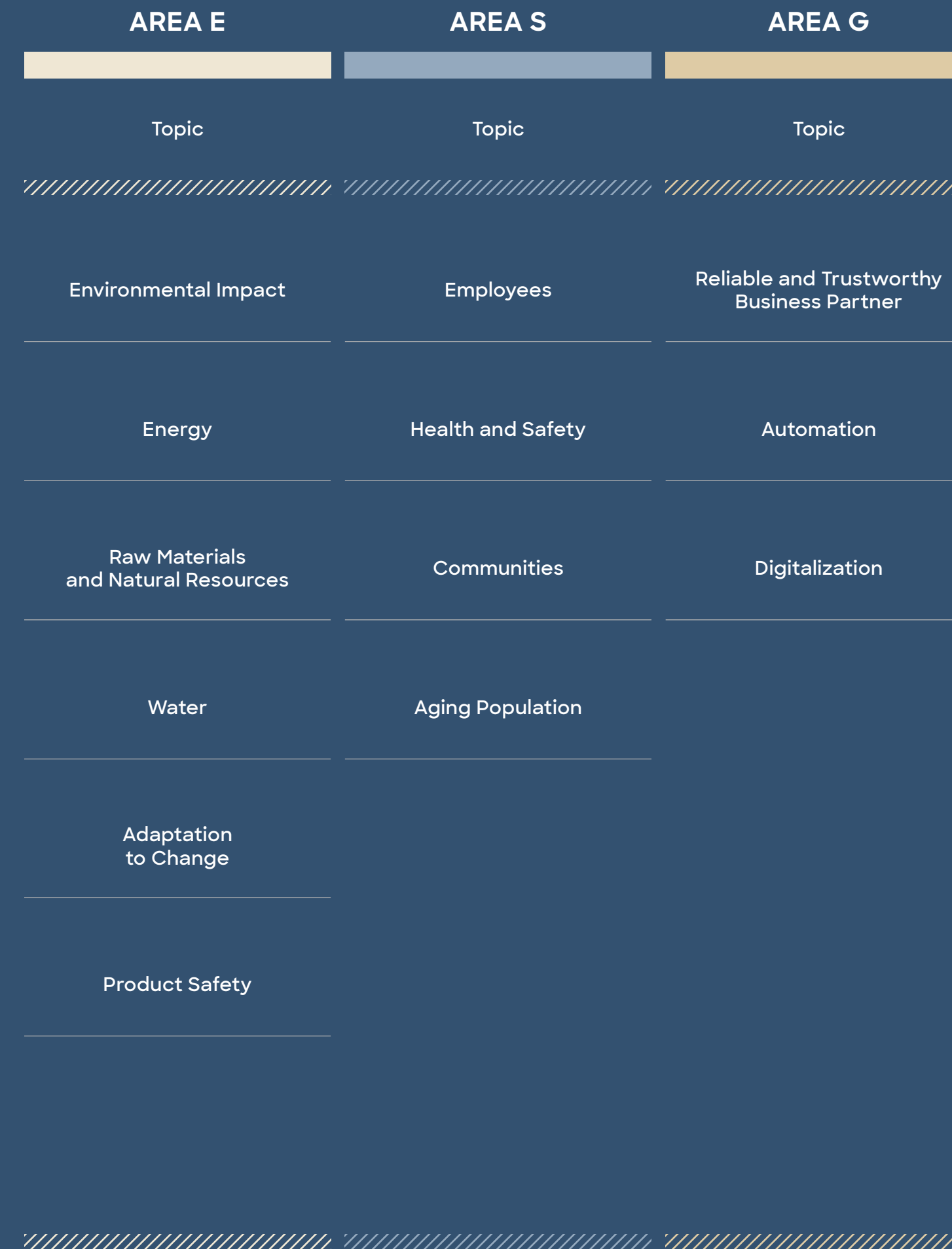
## Double Materiality Assessment

Just as understanding raw materials is essential in crystal production, understanding the inputs that shape our decisions is equally important in sustainability. In 2024, we conducted a Double Materiality Assessment (DMA), enabling us to better understand two dimensions of our business: how we impact the world around us, and how external developments may impact us.

This process, required under the future reporting obligations of the Corporate Sustainability Reporting Directive (CSRD), extends far beyond climate-related topics. It includes impacts on communities, working conditions, resource consumption, innovation, and the quality of our supply chain. The DMA provided us with a structured overview of impacts, risks, and opportunities (IROs) across our entire value chain.

We began by identifying relevant topics, which were subsequently evaluated together with our stakeholders. The outcome is a set of key priorities that now shape the direction of our strategic activities, from responsible manufacturing to partnerships and care for the region from which we originate. The assessment was conducted in cooperation with Preciosa’s senior management team and external experts to ensure maximum transparency and methodological rigor.

## VISUALIZATION OF KEY ESG TOPICS



CHAPTER 2

# Origin: Crystal Comes to Life

Every piece of crystal has its own story. Long before it is touched by human hands, melted, and brought into the light, it exists within raw materials – in sand, minerals, and the chemical elements and compounds that often formed over millions of years. At Preciosa, raw materials are far more than technical specifications in a table; they are part of our identity. We believe crystal can only be truly beautiful when its creation exists in harmony with nature, people, and its place of origin. As a company, we feel responsible not only for where our materials come from, but also for how we work with them and the relationships we build with our suppliers.



## KEY COMPONENTS OF THE GLASS BATCH

### SAND

The primary silica-based raw material forming the main component of the glass melt.

### FLUXES

Primarily soda ash (sodium carbonate), potash (potassium carbonate), and lithium carbonate, which reduce the melting temperature of silica sand and facilitate the glass melting process.

### REFINING AGENTS

For example potassium nitrate and antimony oxide, which help remove bubbles from the glass melt.

### STABILIZERS

Primarily limestone (calcium carbonate), added to improve the chemical durability and structural strength of the glass.

### COLORING AGENTS

From coloring oxides such as cobalt oxide, titanium oxide, and cerium oxide to precious elements including gold and silver.



“ We believe crystal can only be truly beautiful when its creation exists in harmony with nature, people, and its place of origin.”



# Local Sourcing of Raw Materials

Our products are manufactured in the Czech Republic. We primarily use locally sourced or European raw materials in our production – approximately 80% of materials originate directly from the Czech Republic, 10% from other European Union countries, and only 10% from third countries (calculated by weight). These exceptions mainly involve materials essential for glass production that are not available within Europe.

A key raw material for us remains Czech glassmaking sand, whose purity and availability have shaped the reputation of Bohemian glassmaking for centuries. This sand is distinguished by its consistent quality, on which all our glass formulas have been carefully developed and optimized over the years. Its local origin represents a significant advantage for us, ensuring continuity of quality, deep technical know-how, and a strong connection to the regional glassmaking tradition on which we continue to build.

Today, its use goes hand in hand with responsibility toward the landscape from which it originates and the communities affected by its extraction and processing.

All imported raw materials are sourced exclusively from verified long-term partners who undergo regular audits and inspections. We require our suppliers to guarantee that all materials are sourced in compliance with international human rights and environmental protection standards.

In fiscal year 2025, we introduced a Supplier Code of Conduct defining the ethical, labor, human rights, and environmental standards we expect from our suppliers. This code forms an integral part of every purchase order and our supplier policy. We are committed to sustainable and ethical supplier relationships aligned with our values and principles of responsible business conduct.

# 80%

of materials originate directly from the Czech Republic

# 10%

from other European  
Union countries

# 10%

outside of the European  
Union

CASE STUDY

### A Grain of Sand

The primary raw material used in glass production is glassmaking sand, whose quality fundamentally influences the final properties of crystal. Preciosa sources this material from Sklopísek Střeleč, a.s., a traditional Czech supplier of raw glassmaking materials.

Extraction takes place in the Bohemian Paradise region, home to deposits of exceptionally pure silica sand. This means the raw material is sourced less than 30 km from our headquarters and approximately 65 km from our glassworks in Dolní Prysk. The supplier places strong emphasis on responsible extraction practices, systematic land reclamation, and protection of the surrounding landscape. These principles align closely with Preciosa's approach to sustainability management within the supply chain.

” We view glassmaking sand extraction as a long-term commitment to both the landscape and local communities. Our priority is the responsible use of natural resources, systematic land reclamation, and a transparent approach toward all partners.

Sklopísek Střeleč, a.s.



ORIGIN OF THE SAND

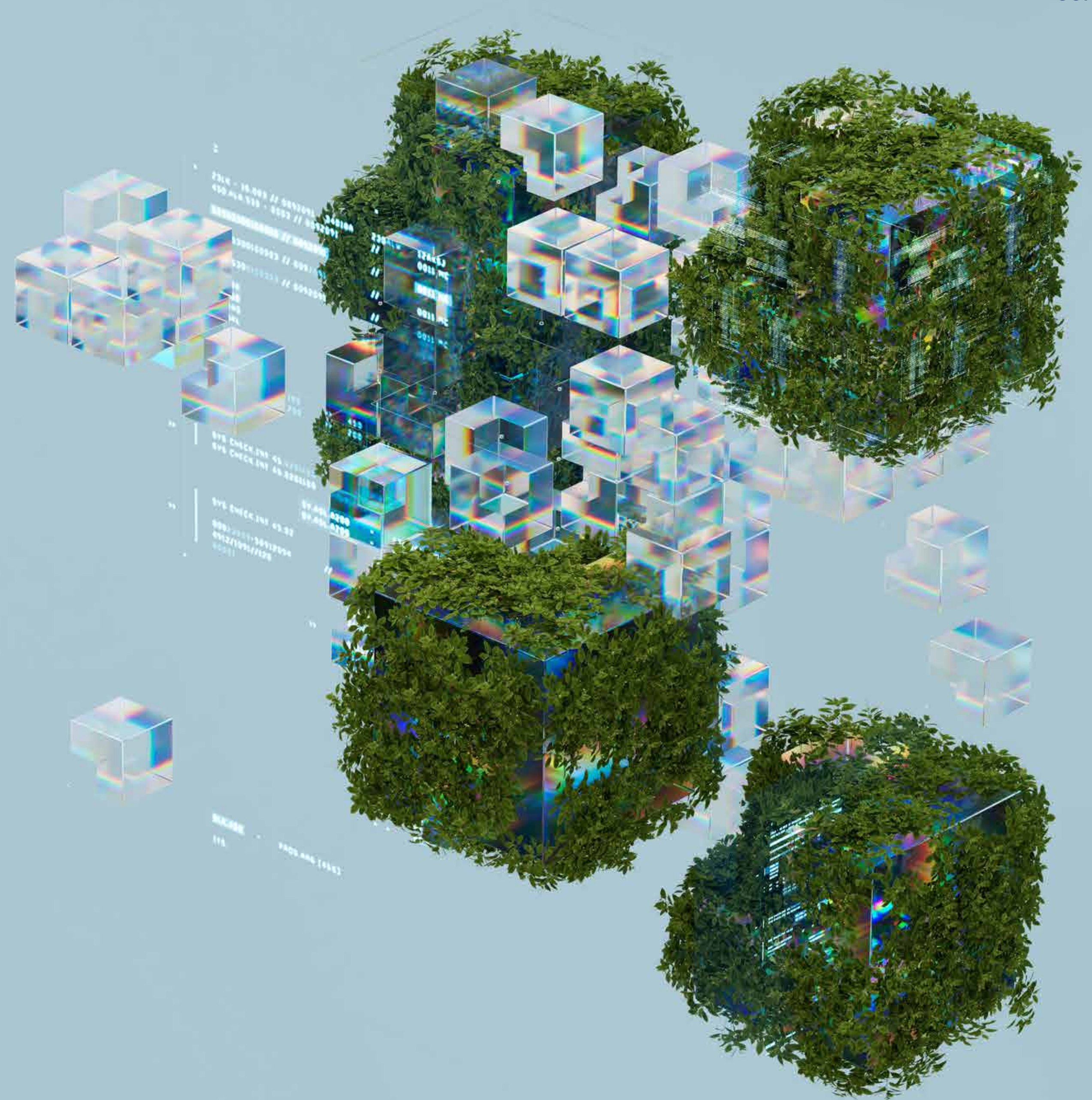
Preciosa is the only crystal manufacturer using sand sourced exclusively from Europe.

# Responsible and Secure Supply Chain

At Preciosa, we place strong emphasis on the integrity of the entire supply chain – from the origin of raw materials to the final product. We do not cooperate with suppliers of conflict minerals (3TG) and strictly comply with European Union requirements for the responsible sourcing of tin, tungsten, tantalum, and gold.

The gold used in certain colored glass formulas and surface finishes is sourced exclusively from suppliers able to verify its origin outside conflict-affected areas. From suppliers of these metals, or materials containing them, we require completed CMRT/RMI reports. Our partners undergo a rigorous approval process and regularly demonstrate compliance with international standards. Upon request, we provide customers with official declarations confirming the conflict-free origin of our materials.

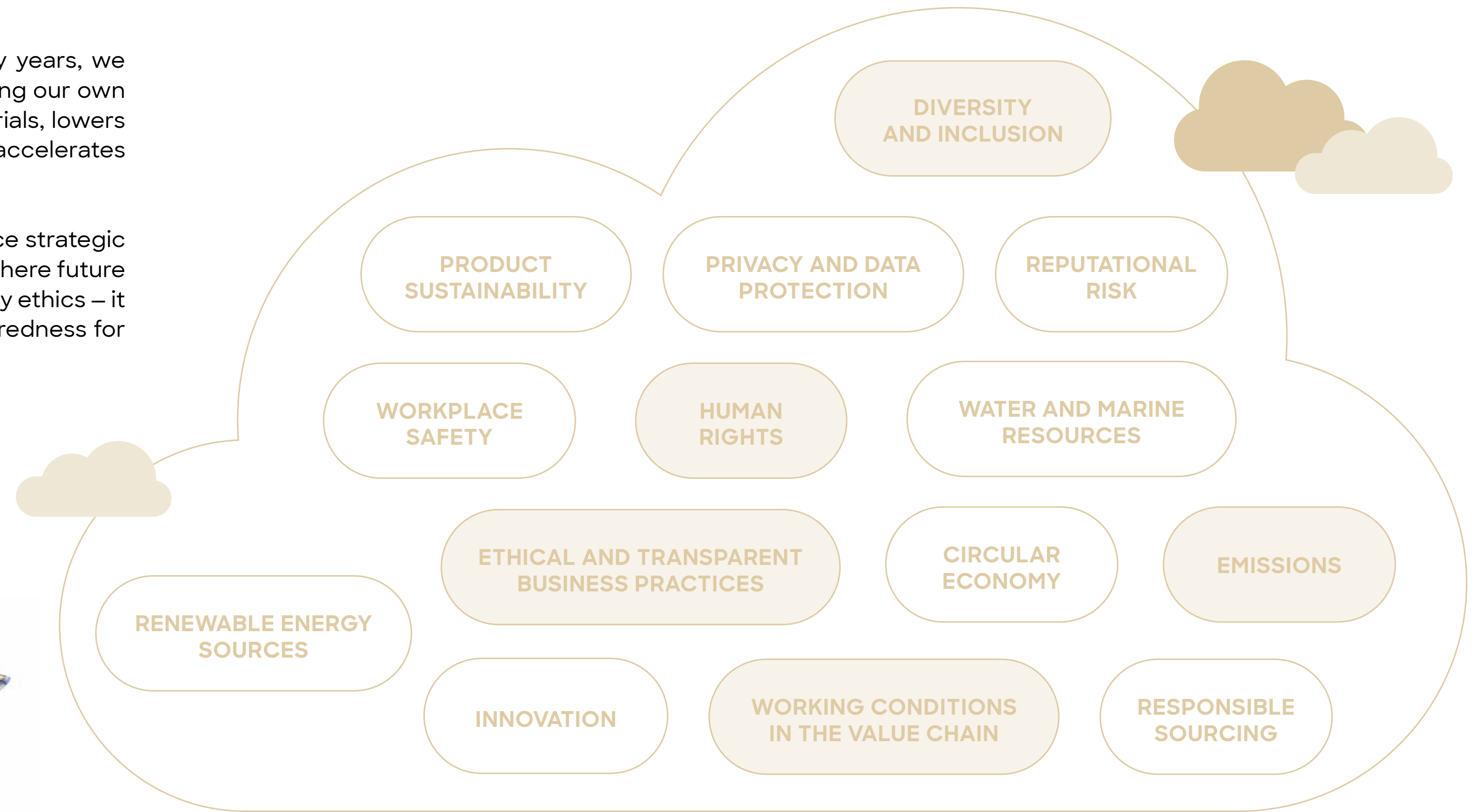
” ” The gold used in certain colored glass formulas and surface finishes is sourced exclusively from suppliers able to verify its origin outside conflict-affected areas.



# Circularity in Production

Sustainability is an integral part of crystal’s very origin. For many years, we have worked with a high proportion of recycled glass cullet. Reusing our own production waste reduces the consumption of primary raw materials, lowers the energy intensity of melting, decreases our carbon footprint, accelerates the melting process, and reduces wear on glass furnaces.

At the same time, we continuously explore opportunities to replace strategic raw materials with renewable or alternative sources, particularly where future availability may become limited. This approach is not driven solely by ethics – it also strengthens the resilience of our supply chain and our preparedness for long-term market changes.



## TOPICS RELATED TO THE PRODUCTION PROCESS

Circularity is only one of many supply chain topics addressed by Preciosa, both with our partners and within our own operations. The same applies in reverse. For our partners, it is essential to understand our approach to the following topics and our long-term vision for the future.

# Risk Management, Technology, and Supply Stability

The stability of our supply chain is essential to us. When selecting suppliers, we evaluate not only the balance between price and quality, but also reliability, social and technological standards, and certifications such as ISO.

We conduct regular annual evaluations of strategic suppliers, including on-site visits to production facilities. For strategic raw materials, we continuously monitor alternative sources and substitution options to ensure we can respond flexibly to supply disruptions and regulatory changes.

Equally important is our in-house development and production of key manufacturing technologies and heavy machinery. We also rely on the expertise of specialists from the region, often graduates of Czech technical universities and vocational schools. This approach ensures not only technological independence, but also control over quality, safety, and the long-term sustainability of production.

Mapping the entire value chain, together with its gradual digitalization and automation, is among the key priorities planned within fiscal year 2025 and the years ahead. For our partners, this sends a clear message: ESG is not merely an obligation for us, but an integral part of our long-term strategy and risk management.



“Our responsibility does not begin in production, but with raw materials. Knowledge of material origin, long-term supplier relationships, and preparedness for change are key to the stability and trust our customers place in us.”

**Petr Ježek**  
Head of Purchasing,  
Preciosa

## KEY MESSAGES

## During FY25, Preciosa:

1 Manufactured its products in the Czech Republic.

2 **10%**

Sourced the majority of its raw materials from the Czech Republic and the European Union, including Czech glassmaking sand as a key raw material — only 10% of materials (by weight) originated from outside the EU.

3 Did not cooperate with suppliers of conflict minerals (tin, tungsten, tantalum, and gold) and fully complied with European requirements for responsible sourcing.

4 Developed long-term partnerships with verified suppliers while also strengthening value chain mapping, digitalization, and risk management.

CHAPTER 3

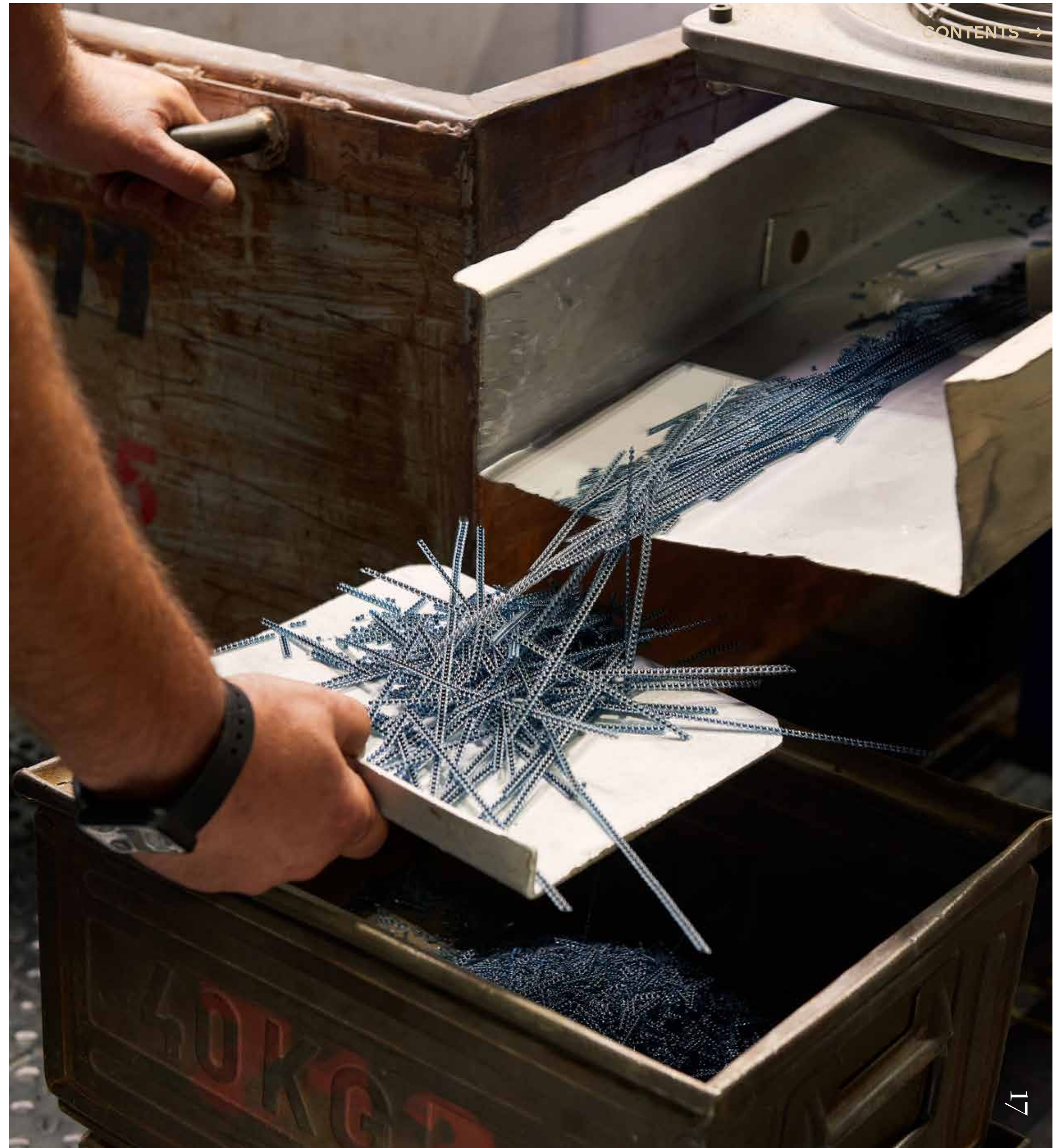
# Creation: Crystal Becomes Value

The development of glass is an exceptionally demanding technological and chemical process requiring precise control over temperature and materials. Every detail and every individual step contributes to the final result. The products created in our facilities are the outcome of a combination of tradition, cutting-edge research, and in-house expertise.

We continuously invest in innovation and have built our own research team, enabling us to push the boundaries of possibility. Our innovations are rooted in a craft tradition passed down through the region's mountain communities for centuries. Respect for our roots, close collaboration between production and development, and technological know-how have enabled Preciosa to grow into one of the world's leading glass manufacturers.



Research conducted in Preciosa's R&D laboratories is carried out at an international level. A team of nearly forty specialists in chemistry, physics, and engineering focuses not only on glass development and surface finishing, but also on the development of new machinery and production technologies used to manufacture crystal.



# Innovation and Research

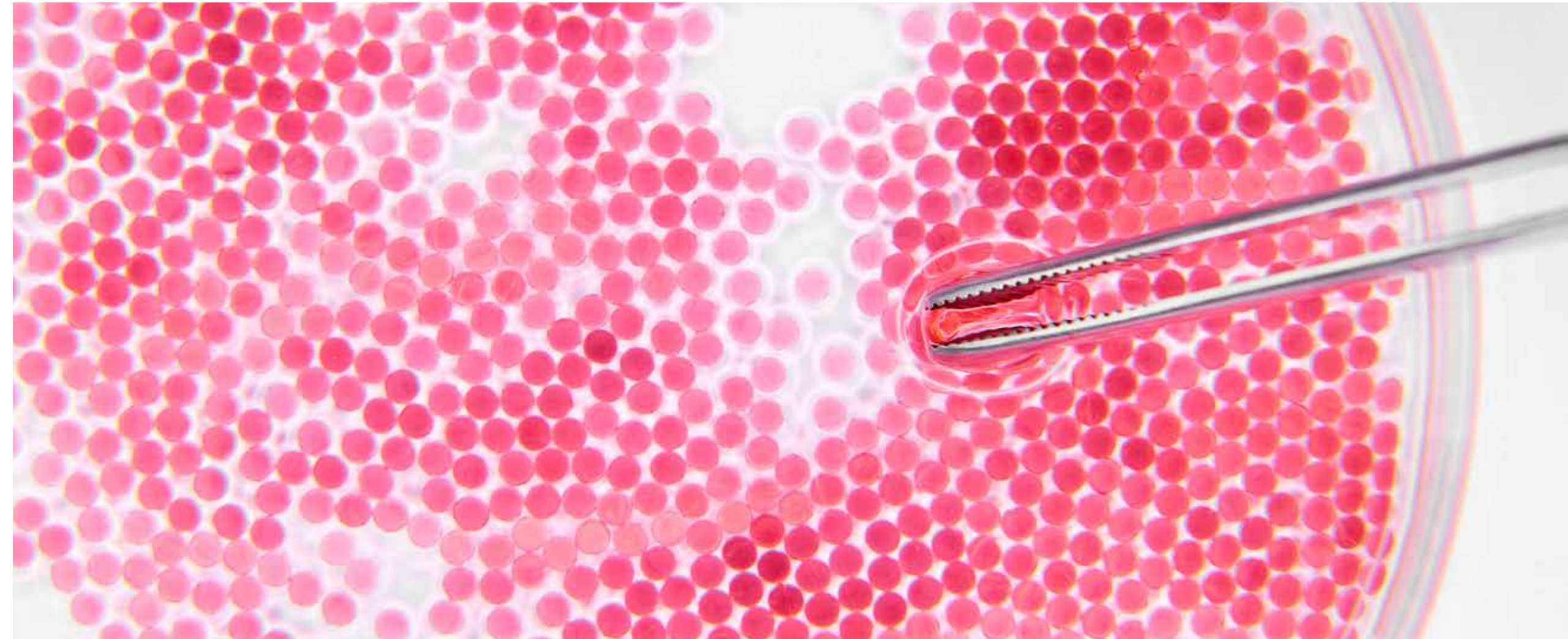


Our Research and Development department combines the expertise of previous generations with the latest scientific knowledge. We collaborate with prestigious universities and research centers.

Research conducted in Preciosa's R&D laboratories is carried out at an international level. A team of nearly forty specialists in chemistry, physics, and engineering focuses not only on glass development and surface finishing – from the design of chemical compositions and precise analysis to the testing of optical and physical properties – but also on the development of new machinery and production technologies used to manufacture crystal.

Our researchers develop new colored glass formulas, study pigment interactions and coating technologies, and create surface finishes that enhance both the aesthetic and functional value of materials. At the same time, prototypes of molds, tools, and forming equipment are being developed to enable more precise cutting, greater geometric stability, and finer detailing. These innovations shape the future direction of crystal manufacturing and push the boundaries of the entire industry.

Environmental responsibility and sustainability are also an integral part of our laboratory activities. We focus on reducing air emissions, wastewater treatment, and waste minimization. Innovation is transforming not only production processes, but also the composition of glass itself. In cooperation with the Ecology department and REACH specialists, our internal development teams continuously identify and replace hazardous chemical substances, such as lead, cadmium, arsenic, and chromium, with safer alternatives.



## HOW DO WE ADDRESS HAZARDOUS MATERIALS?

Chemical substances hazardous to human health or the environment are gradually being phased out and replaced with safer alternatives that comply with the strictest legislative requirements. We adhere to the highest standards to ensure safe working conditions and environmental protection.

## HOW ARE WE INNOVATING WATER MANAGEMENT PROCESSES?

Water conservation at Preciosa is based on a closed-loop system in which wastewater is treated and returned to production. Thanks to our own wastewater treatment facilities and the recycling of process water, we significantly reduce water withdrawals from natural sources and minimize our environmental footprint. Modern water treatment and recirculation systems ensure that every drop leaves the Crystal Valley landscape with maximum respect for nature.

During the reporting period covered by this report, we achieved significant progress in the development of colors completely free from lead, cadmium, and other potentially hazardous elements, such as chromium. We introduced four new glass shades: Acid Yellow, Dusty Rose, Lilac Ash, and Mint Green. This approach reflects not only our commitment to innovation, but above all our dedication to safety – in our production, we do not accept risks to the health of our employees or the surrounding environment. It forms the foundation of our long-term strategy: innovation as a form of environmental responsibility.

“ We continuously work on developing new colors — entirely free from lead, cadmium, and other potentially hazardous elements such as chromium.



“Every new glass shade is created through careful development of its individual properties. We address not only the color itself, but also the material composition, thermal behavior during processing, and the environmental impact of individual components. This comprehensive approach is key to the development of modern and responsible glass colors.”

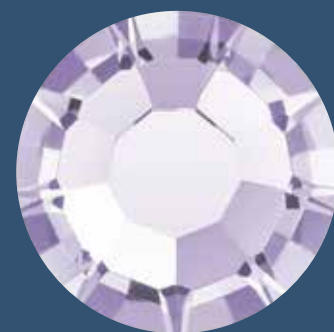
**Květa Sázavová**  
Head of Glass Research and Development,  
Preciosa

REVOLUTIONARY PRECIOSA COLORS



**2018**  
**RED VELVET**

The first truly red shade in the industry completely free from cadmium, despite the fact that rich red tones were traditionally considered impossible to achieve without hazardous metals.



**2022**  
**MESMERA**

The first commercially available crystal that changes color, produced using recycled neodymium.



**2024**  
**ACID YELLOW**

An entirely new environmentally responsible yellow shade free from cadmium, available exclusively from Preciosa.

We are members of the SEDEX platform, through which our application center and all production facilities manufacturing crystal components and fine jewelry stones are audited according to the SMETA methodology. We have been assessed in all four pillars, meaning that in addition to social and safety aspects, we are also evaluated in the area of environmental performance.

Processes at our main production facility in Liberec have also been audited under the C-TPAT program focused on supply chain security in international trade, qualifying us to supply products to the USA.

Every year, we also undergo a number of customer audits covering social responsibility, safety, environmental protection, and quality management systems. As part of this process, we regularly complete customer questionnaires and confirm that our activities comply with the principles of responsible supply chain management, including requirements related to conflict minerals, anti-terrorism measures, and anti-money laundering policies.

For us, product integrity means more than quality alone. It represents honesty and transparency. Every piece is the result of a transparent process in which we understand the origin of raw materials from the very beginning of production. This is one of the reasons why Preciosa stones are globally recognized for their exceptional precision and consistent quality.

Our standards allow only minimal tolerances – often within hundredths of a millimeter – enabling seamless application in the fashion and jewelry industries.

To achieve this level of precision, we combine advanced camera systems with proprietary technological innovations. Throughout our production and quality control processes, we use camera-based systems that ensure high product quality through precise and stable inspection. These systems enable us to monitor key parameters important to our customers – not only quality control and dimensional consistency, but also the identification and sorting of defects that may occur on individual components.

In addition, our internal research team has developed a new technology enabling extreme precision directly during the cutting process itself. The result is reduced waste, a more efficient manufacturing process, and another step forward in expanding the boundaries of what is possible in glassmaking.

” Our crystal components and fine jewelry stones are audited according to the SMETA methodology. In addition, processes at our main production facility in Liberec have been audited under the C-TPAT program focused on supply chain security.

## PRODUCT QUALITY AND INTEGRITY

Every Preciosa product undergoes rigorous testing to meet not only aesthetic expectations, but also safety and environmental standards. This allows us to ensure that Preciosa crystal is not only beautiful, but also compliant with strict safety requirements.

### Process Certifications

- ISO 9001
- ISO 14001\*

### Product Certifications

- REACH
- RoHS\*\*
- ASTM
- CPSC
- CPSIA
- OEKO – TEX
- Safety of Toys

These product certifications apply to crystal components and fine jewelry stones in all shades, but not to products manufactured by Preciosa Machinery. A complete overview and description of all certifications can be found on page 49.

*\*ISO 14001 applies only to Preciosa Machinery Liberec.*

*\*\* RoHS certification does not apply to citrine, hyacinth, olivine, light siam, siam, and sun shades.*

KEY MESSAGES

During FY25,  
Preciosa:

1

4

Developed and introduced four new innovative glass shades.

2

## Compliance

Confirmed full compliance with international standards including ISO 9001, ISO 14001\*, REACH, RoHS, and OEKO-TEX, further strengthening product integrity and reliability.

CHAPTER 4

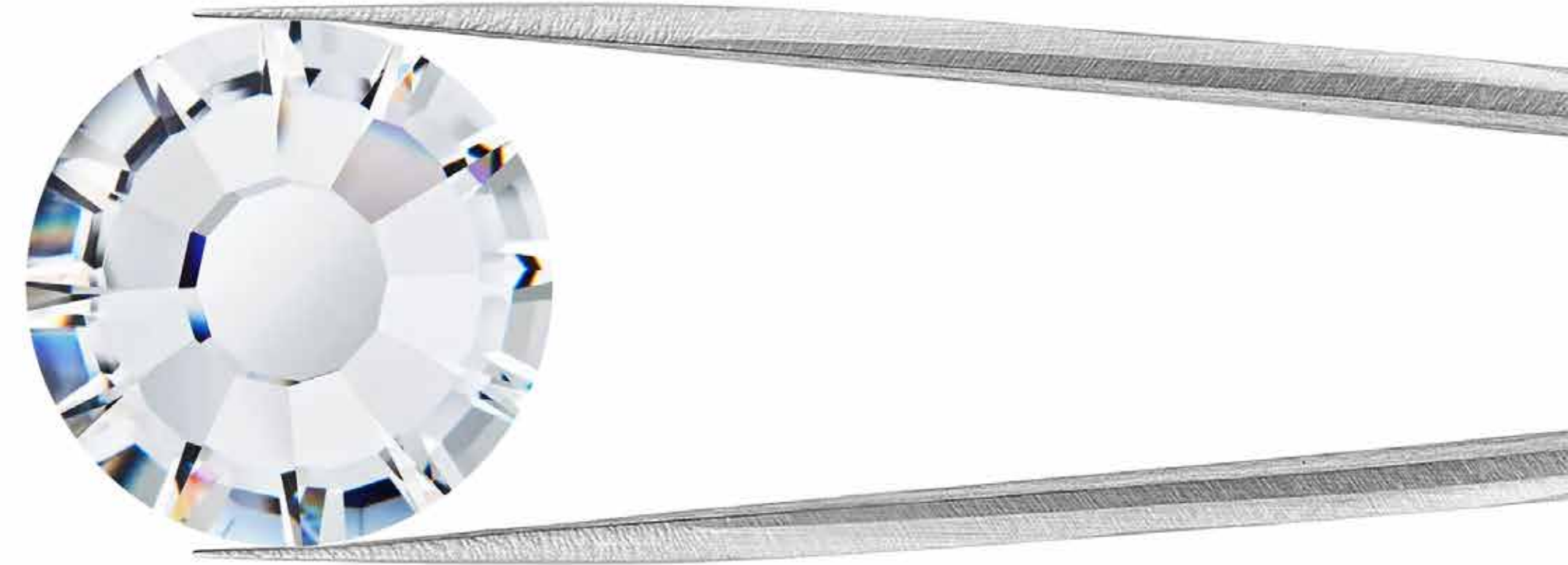
# Form: Crystal Takes Shape

The production of glass begins with melting. It is the moment when natural resources, chemical and technological know-how, and human craftsmanship come together in the heat of the furnace. At this stage, raw materials – pure silica sand, limestone, soda ash, and potash – are transformed into crystal. It is a process that carries a certain magic, while also serving as a reminder that brilliance is born from nature and its resources.

For us, the transformation of raw materials into crystal represents a defining moment – and at the same time a moment when we are most aware of our responsibility toward environmental impact. We respect tradition not only through our dedication to glass itself, but also through our respect for nature. We believe crystal shines brightest when its brilliance is connected with sustainability.

0.1 mm

The precision to which our crystals are cut.



THE JOURNEY OF CRYSTAL CREATION

1 RAW MATERIALS

The primary raw material used in glassmaking is silica sand, mixed with additional components such as soda ash and potash, which reduce the melting temperature. To optimize the melting process, glass cullet is added. Coloring agents are used to achieve desired shades, while refining agents help remove bubbles from the glass melt.

2 MELTING

The glass batch is melted in furnaces at temperatures between 1400 and 1450 °C. At these temperatures, the mixture transforms into a homogeneous glass melt.

3 STRIKING

Certain colors are created through a process known as striking, during which the color develops after the glass has been melted. The final shade is formed through additional reheating and requires precise control of conditions within the furnace. This process is used to create specific tones, including certain shades of red and orange colored with rare elements such as gold, silver, or selenium.

4 FORMING

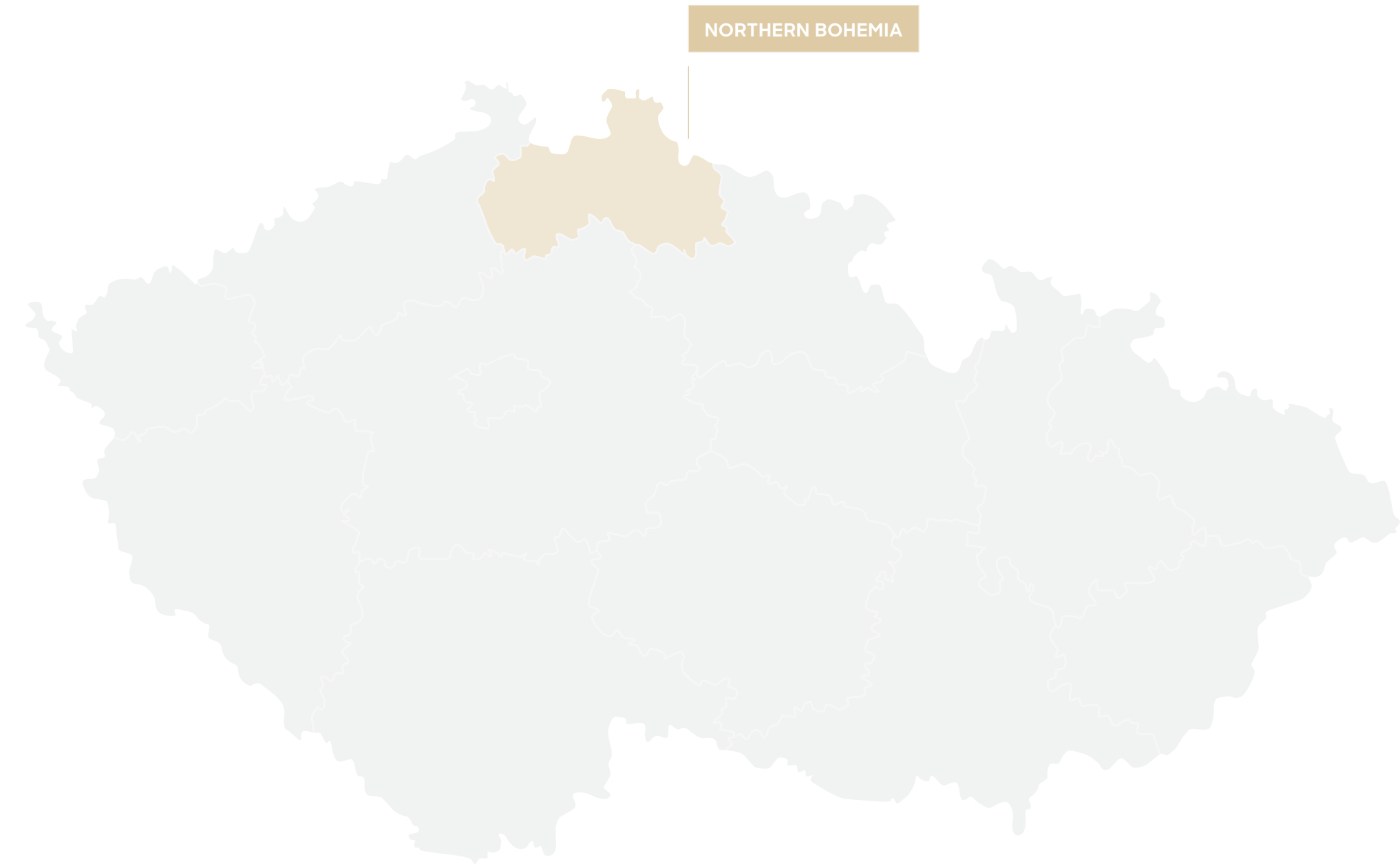
The molten glass is then shaped into semi-finished forms, which are subsequently refined through mechanical processing.

5 CUTTING

Glass cuts are finished with precision down to 0.1 mm to ensure optimal light reflection. This geometry and symmetry enhance the brilliance of the crystal.

# Connected to the Region

For Preciosa, strong roots in Northern Bohemia are essential, as our entire production cycle takes place here – from melting and cutting to polishing and final finishing. Thanks to this, we maintain full control over individual processes, utilize local raw materials, reduce the carbon footprint associated with transportation, and minimize emissions linked to electricity and natural gas consumption. This approach enables us to combine the local glassmaking tradition, passed down from generation to generation, with modern technologies and a responsible approach to nature that continues to shape our craft.



## THE JOURNEY OF CRYSTAL CREATION

### 6 POLISHING

Cut preforms are finalized through a polishing process that enhances the optical perfection of the glass.

### 7 ADDITIONAL FINISHING

After mechanical processing, crystals are enhanced through specialized surface treatments:

- Coatings (metallic reflective layers creating various visual effects)
- Hotfix adhesive layers for heat application to textiles and porous materials
- Reflective foils applied to the back of stones to intensify brilliance

### 8 SORTING AND QUALITY CONTROL

Our inspectors consistently select only the very best – components capable of standing up to global competition.

### 9 DISTRIBUTION AND CUSTOMER SERVICE

At the end of the production process, crystal components are packaged and shipped to more than 120 countries worldwide. The sale of precision-cut crystals is complemented by customer service and consulting that support the effective use of our products across fashion, design, and jewelry applications.



# Carbon Footprint

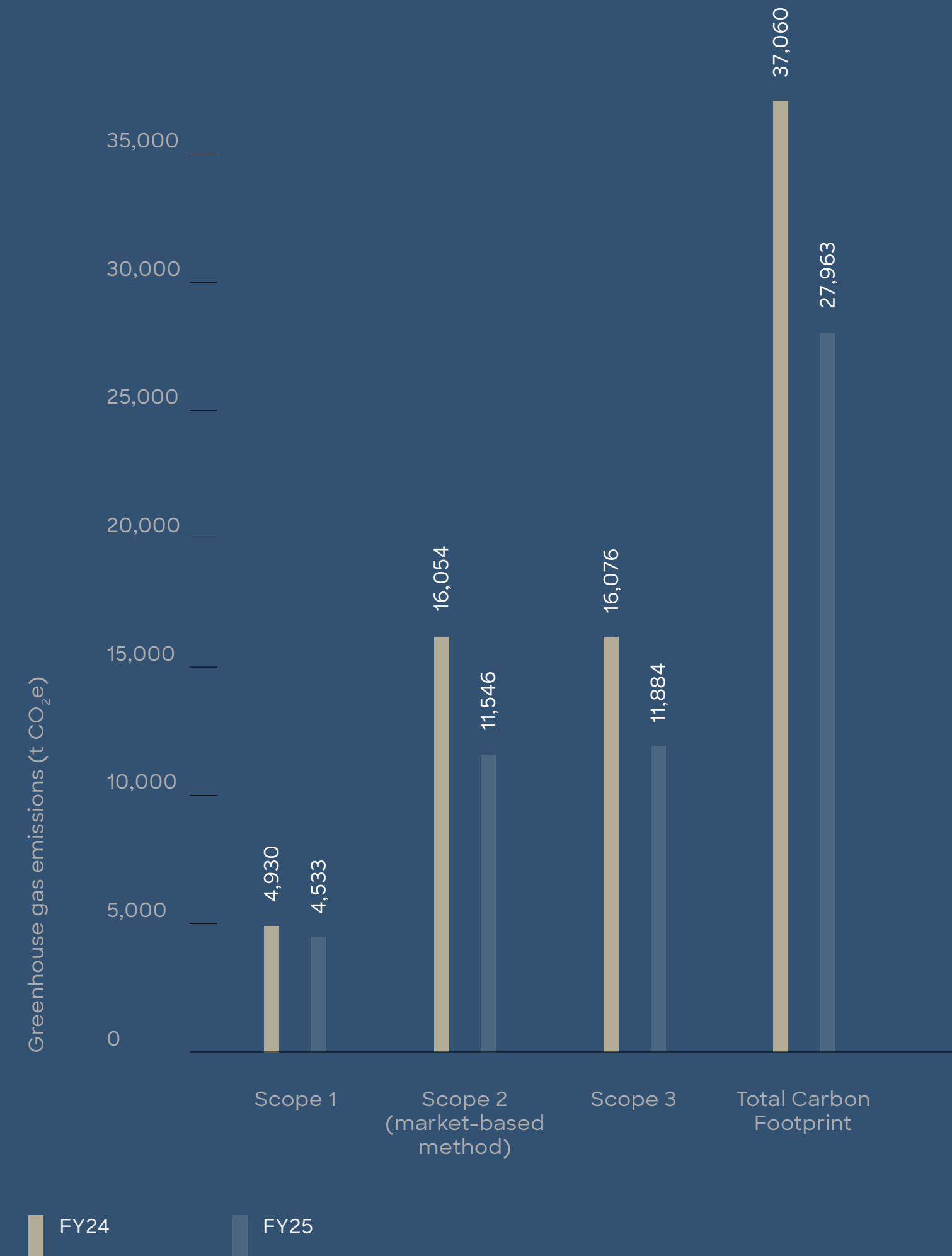
The carbon footprint is one of the key indicators of our production’s impact on climate change. Every kilogram of sand consumed and every flame within our melting furnaces carries its own emissions footprint.

We have been calculating our carbon footprint for the past two years, with each assessment either conducted or validated by a third party. We currently analyze the outcomes of these calculations, identify key processes responsible for the highest greenhouse gas emissions, and work toward a decarbonization strategy. Our long-term goal is to achieve net-zero emissions by 2050.

To quantify greenhouse gas emissions, we use the GHG Protocol, the world’s most widely recognized standard for carbon footprint calculation. Results are expressed in CO<sub>2</sub> equivalent (CO<sub>2</sub>e) using market-standard methodologies. Our calculations include Scope 1 emissions (direct emissions), Scope 2 emissions (indirect emissions from purchased energy), and Scope 3 emissions (other indirect emissions). During FY25 (April 1, 2024 – March 31, 2025), the company’s total carbon footprint reached 27,963 tons of CO<sub>2</sub>e.

Compared to the previous fiscal year, when emissions totaled 37,060 tons of CO<sub>2</sub>e, we achieved a reduction of 9,097 tons of CO<sub>2</sub>e, representing a 24.5% decrease. Behind this result lies a series of strategic decisions – from the modernization of production equipment and lower natural gas consumption to more efficient waste management and energy optimization across the entire production process. Electricity consumption remains the largest contributor to our carbon footprint; however, we successfully reduced both direct emissions (Scope 1) and indirect emissions (Scopes 2 and 3).

BREAKDOWN OF GREENHOUSE GAS EMISSIONS IN FY24 AND FY25



## HOW DO WE CALCULATE EMISSIONS?

The GHG Protocol (Greenhouse Gas Protocol) is an internationally recognized framework for measuring and reporting greenhouse gas emissions. It enables systematic monitoring, reporting, and management of emissions, categorized into Scopes 1, 2, and 3.

CO<sub>2</sub> equivalent (CO<sub>2</sub>e) is a unit that converts all greenhouse gases into the equivalent amount of carbon dioxide according to their global warming potential (GWP). This allows all emissions to be expressed in a single, comparable metric.

The market-based method is an approach used to calculate greenhouse gas emissions associated with purchased electricity, taking into account the specific energy sources and supplier mix rather than the average national energy mix.

# Supply Chain and Responsible Employee Mobility

When selecting suppliers, we consider not only sustainability, but also local relevance. We prioritize partners located near our production facilities, helping to reduce transportation distances, lower CO2 emissions, and support the local economy.

We take a responsible approach to business travel as well. We always assess whether travel is truly necessary and, whenever possible, prioritize online communication over in-person meetings. This approach contributes to reducing Scope 3 emissions (indirect emissions), particularly those related to transportation and material sourcing, while also enabling better management of environmental impacts across the supply chain.

Whenever possible, we replace in-person meetings with online communication and choose air travel only in justified cases.



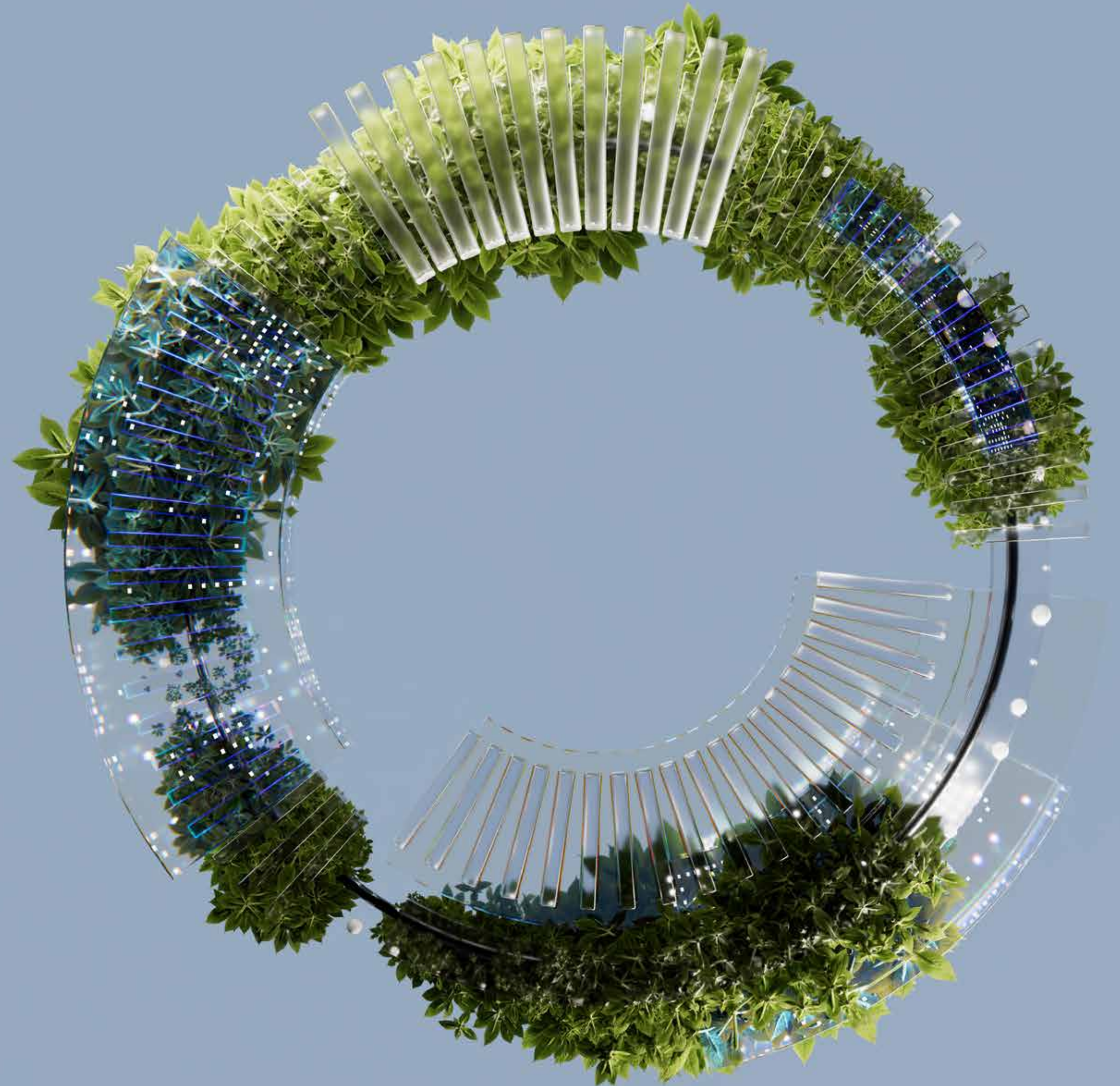
# Energy Efficiency and Energy Management

We are committed to continuously improving the energy efficiency of both our production and supporting operations. Energy consumption is monitored at the level of individual production units, allowing us to accurately identify key areas for optimization and process improvement.

Examples of these measures include the use of compressor heat for water heating, heat recovery from wastewater for preheating water, and the replacement of lighting systems with energy-efficient alternatives. We also promote a responsible approach to energy management among employees. In addition, we implement technological and organizational measures aimed at reducing energy intensity, such as optimizing production processes, modernizing manufacturing equipment, and improving logistics and business travel planning.

In 2025, a cogeneration system was commissioned at our main production facility, enabling the simultaneous generation of electricity and heat from a single energy source. Waste heat generated during electricity production is reused for water heating and operational heating, significantly increasing the overall energy efficiency of the system.

” ” In 2025, a cogeneration system was commissioned at our main production facility, enabling the simultaneous generation of electricity and heat from a single energy source.



# Water Management and Efficient Use of Water Resources

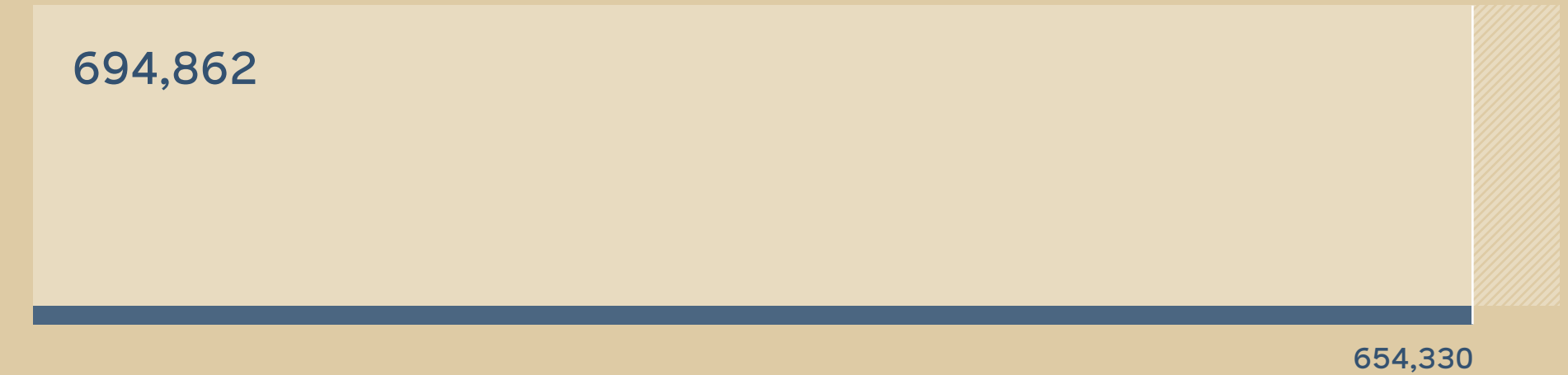
In the Jizera Mountains, where Preciosa has its roots, water has always symbolized life and inspiration for crystal creation. Since the earliest days of glass-making, water has played an essential role – streams supplied water for cooling and washing glass, while mountain currents powered traditional mills. Today, we continue this tradition in a modern way. The cutting and polishing of crystal components and fine jewelry stones are carried out using wet-processing technologies, generating wastewater. We therefore operate a closed-loop water recycling system in which more than 80% of wastewater from production is treated and reused. Even after treatment, however, the water quality changes during the process, which currently limits the extent to which it can be fully recirculated.

The remaining water undergoes additional treatment before being discharged into surface waters (rivers and streams) in accordance with valid permits and regular monitoring of both water quality and volume. This system helps protect local water resources and safeguards the landscape from impacts that continue to threaten many regions today.

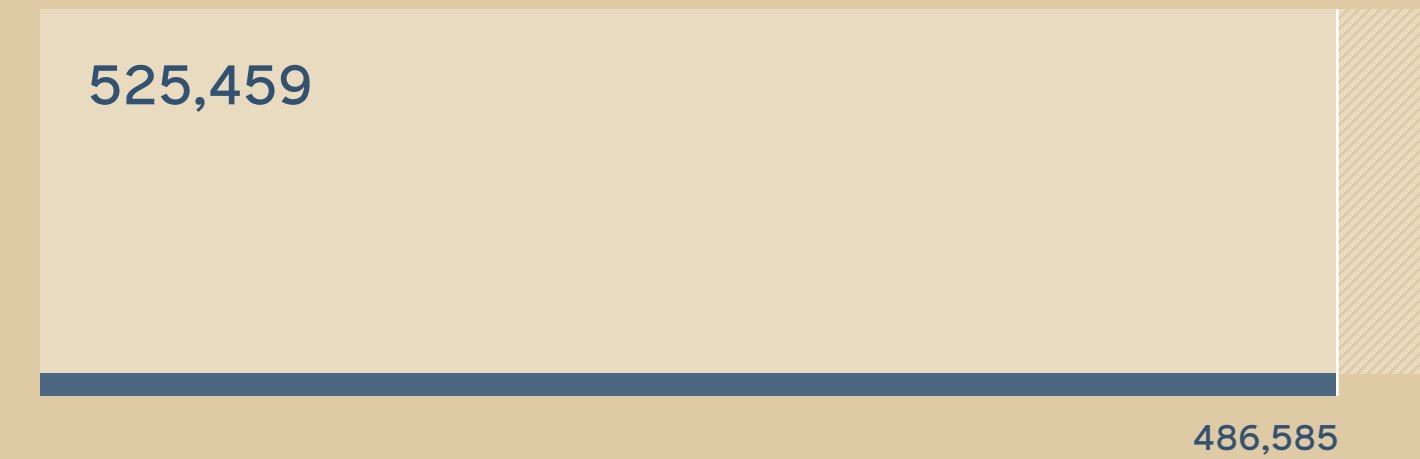
Water management at Preciosa is highly digitalized and automated. Advanced control systems ensure efficient water utilization and enable early detection of leaks or excessive flow rates. Water consumption is monitored at the level of individual production units, and any deviations are immediately analyzed in cooperation with operations management. As part of our environmental initiatives, we introduced internal guidelines for water and wastewater management, and all operations follow the principles set out in our corporate environmental code. This code emphasizes environmental responsibility, pollution prevention, and a transparent approach to the use of natural resources.

## WATER CONSUMPTION

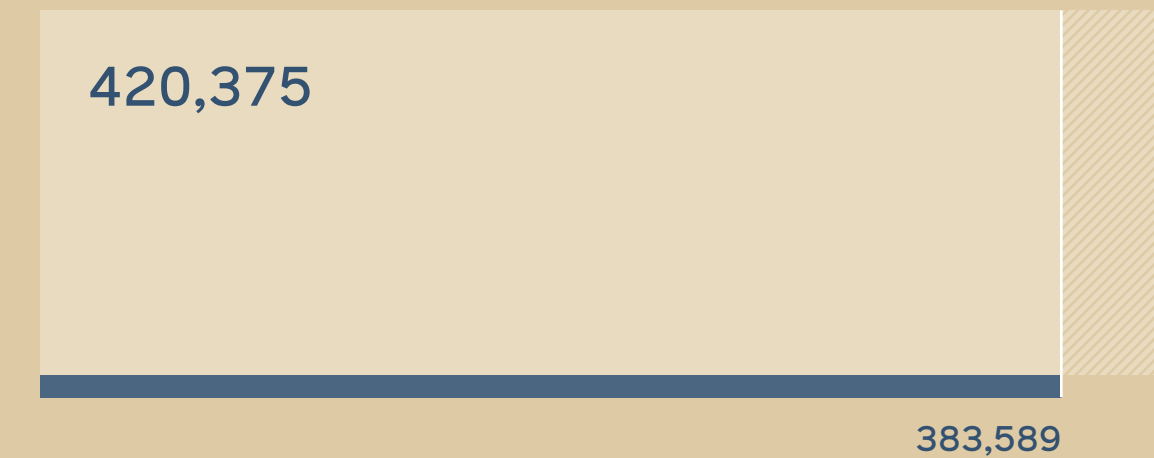
FY23



FY24



FY25



In FY25, total water consumption decreased by 20% compared to FY24.

▨ Total water consumption (m³)    ■ Water consumption in production (m³)



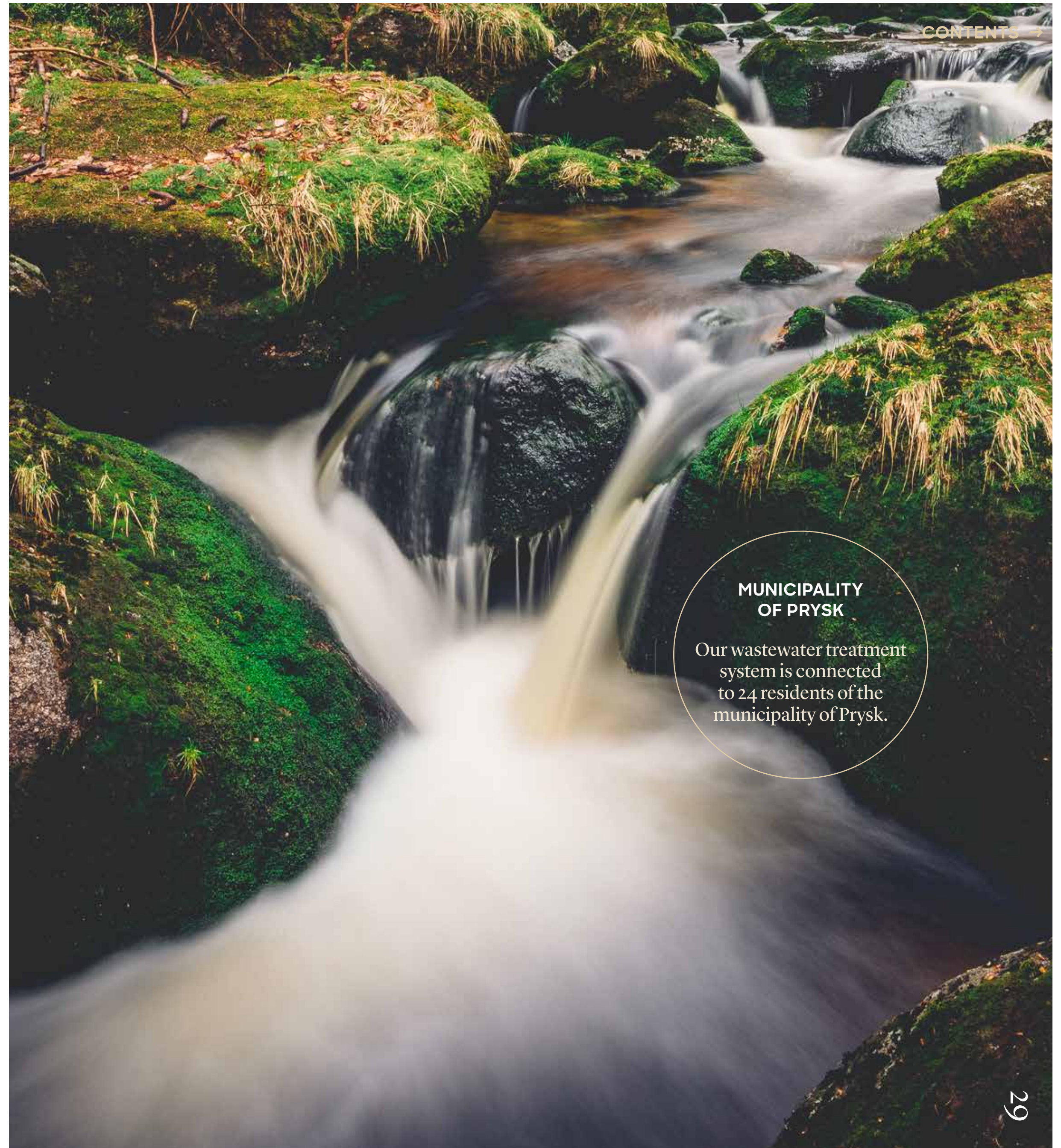
CASE STUDY

### Biological Wastewater Treatment as an Example of Community Responsibility

The wastewater treatment plant located within Preciosa's facility in Pysk has sufficient capacity, which is why we decided to share it with residents of nearby homes. We provide wastewater treatment for them completely free of charge as part of maintaining good community relationships. We consider it natural to support the communities in which we operate. At the same time, this approach helps optimize the continuous operation of the treatment plant, ensuring it functions under ideal conditions. It is one way we give back to the local community while contributing to environmental protection.



” ” We operate a closed-loop water recycling system in which more than 80% of wastewater is treated and reused.



MUNICIPALITY OF PRYSK

Our wastewater treatment system is connected to 24 residents of the municipality of Pysk.

# Recycling and Waste Minimization

Glass is a material that can be brought back to life again and again. That is why we strive to ensure that no part of it goes to waste. We return it to production and extend its lifecycle and value, contributing not only to resource conservation, but also to reducing environmental impact.

Recycling glass cullet is one of the most effective ways to reduce the carbon footprint. At Preciosa, we use only cullet generated from our own production in the glass batch, ensuring its purity and enabling precise dosing of individual components. Within the production process, cullet is carefully identified and sorted to maintain the composition of the glass batch and preserve consistent quality standards. In FY25, the average proportion of recycled cullet reached 20.1%. As a result, glass waste that would otherwise remain unused gains a new purpose and supports a sustainable circular economy.

Part of our research activities also focuses on the use of recycled raw materials, including a project developed in cooperation with the Czech Academy of Sciences aimed at utilizing recycled neodymium from discarded electromagnets. This innovative approach supports the circular economy and expands possibilities for sustainable glass coloring.

## HOW DO WE CONSERVE WATER?

Water is our ally. Through technologies that return eight out of every ten drops back into production, we use it responsibly and efficiently.

## HOW DO WE REDUCE WASTE?

Glass is a material that can be brought back to life again and again. That is why we strive to ensure that no part of it goes to waste. We return it to production and extend its lifecycle and value, contributing not only to resource conservation, but also to reducing environmental impact.

## HOW DO WE REDUCE ENERGY INTENSITY?

Fire has always been at the heart of glassmaking. Every day, we work on innovation, modernization of technologies, electricity savings, and reducing dependence on fossil fuels. Every megawatt-hour saved represents another important step toward more energy-efficient production.



“Glassmaking is beautiful, but also energy-intensive and environmentally demanding. Our role is not only to create beauty, but also to protect the environment in which it is created. We have managed to reduce our carbon footprint by nearly a quarter and return more than 80% of water back into production. Every step we take proves that our craft can also be sustainable.”

**Olga Pitrová**  
Head of Ecology,  
Preciosa

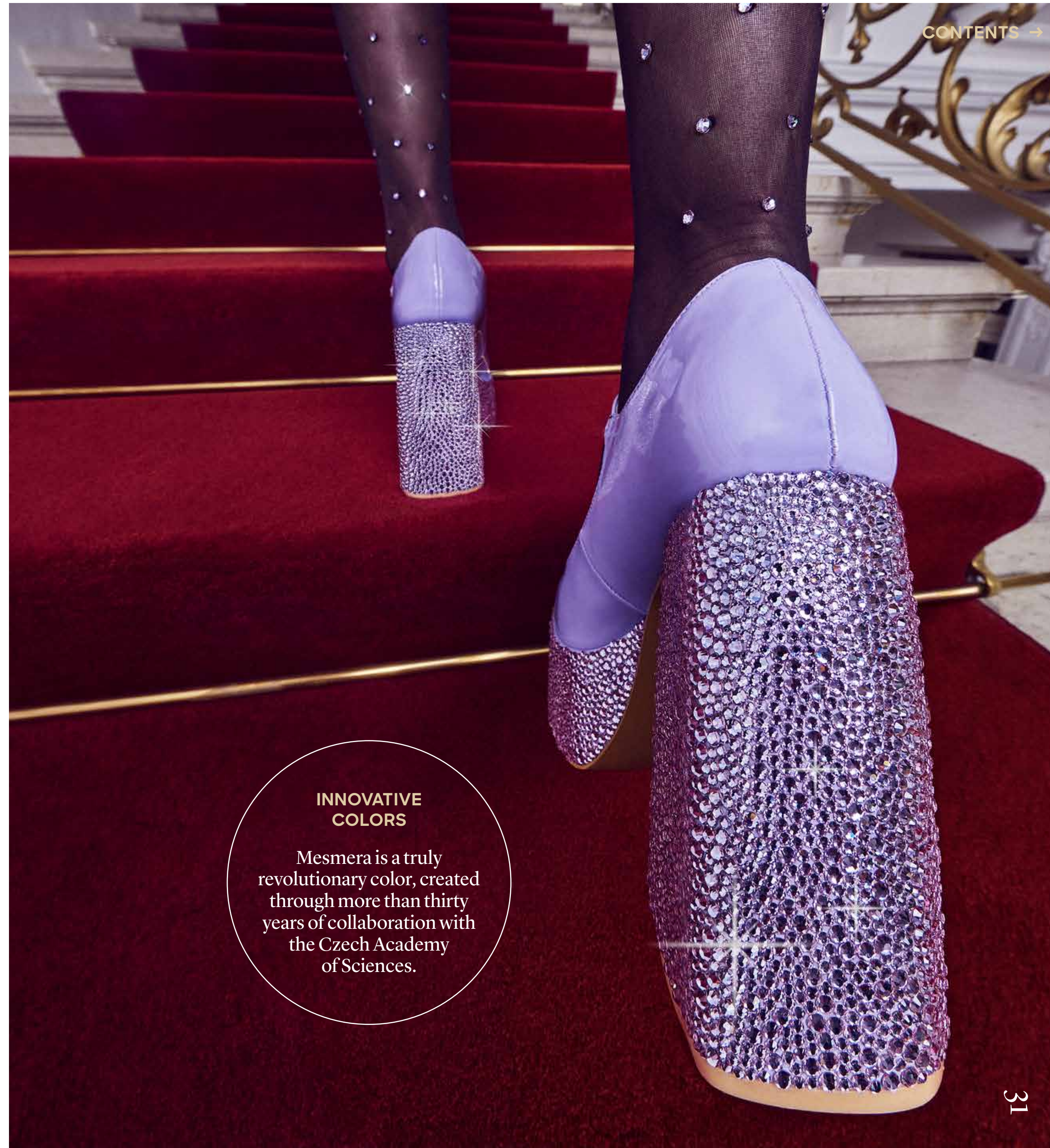


CASE STUDY

### The Use of Recycled Didymium in Glass Production

Didymium, a mixture of neodymium and praseodymium oxides belonging to the rare earth metals group, is characterized by an exceptionally complex spectral structure and metameric properties, enabling it to influence the color appearance of glass depending on lighting conditions. The project, carried out in cooperation with the research team of the Czech Academy of Sciences, focuses on optimizing melting processes and glass formulas to ensure the stable and controlled incorporation of this unique coloring component into production. This approach not only opens new aesthetic possibilities in glass design, but also supports our long-term strategy of sustainable manufacturing through efficient resource utilization and reduced environmental impact.

” Recycling glass cullet is one of the most effective ways to reduce the carbon footprint. At Preciosa, only cullet generated from our own production is added to the glass batch, ensuring its purity and enabling precise dosing of coloring components.



INNOVATIVE  
COLORS

Mesmera is a truly revolutionary color, created through more than thirty years of collaboration with the Czech Academy of Sciences.

KEY MESSAGES

# During FY25, Preciosa:

1

**1/4**

Reduced its carbon footprint by nearly one quarter.

2

**80%**

Reused more than 80% of wastewater from production.

3

**20%**

Achieved an average 20% proportion of recycled glass cullet.

CHAPTER 5

# Light: Crystal Brings Light

Light is more than a physical phenomenon. It is a force that gives life shape, warmth, and hope. Crystal has the ability to enhance light and reveal it in its full beauty and entire spectrum of color. This is why we perceive light as something deeper – as a reflection of who we are and what we create. Just as light can be dispersed into a rainbow, Preciosa brings together the energy of nature, human values, and precise craftsmanship.

For Preciosa as a company, our employees are that light. Their expertise, sense of responsibility, and dedication shape our brand into what it is today. Thanks to them, the brilliance of Preciosa reflects the radiant legacy of the Jizera Mountains region with which we are deeply connected.



# Corporate Culture

Our employees and their know-how are an integral part of the value Preciosa creates. The craftsmanship, experience, and sense of responsibility of the people involved in our production give our products their unique character and connect them with the culture and community of the region from which they originate.

Working conditions are established in accordance with applicable European legislation. We comply with a 37.5-hour working week and provide five weeks of paid vacation to all employees. Companies within the Preciosa Group fulfill all legal obligations, follow principles of fair remuneration, uphold a strict prohibition of child labor, and operate in accordance with an internal ethical code supporting fair and ethical conduct in everyday practice.

We maintain a long-term focus on workplace safety, equal opportunities, and reducing differences in pay between women and men. Average wages reflect fair regional standards within the glassmaking industry. We support flexible working arrangements that help employees return after parental leave. Employees also have access to company childcare facilities. We foster an environment built on equality, fairness, and respectful treatment, where any form of discrimination is unacceptable, while also supporting the inclusion of people with disabilities.

The average length of employment was 16 years.

# 16

# 1,273

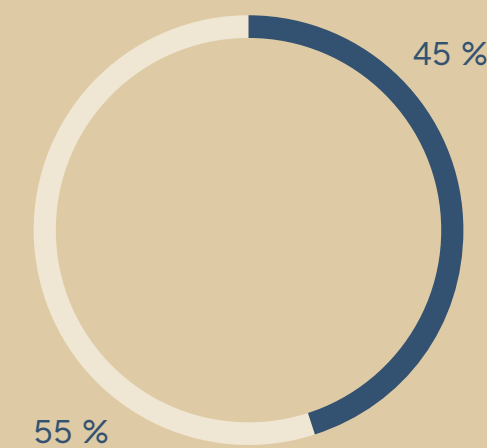
During FY25, an average of 1,273 employees worked for our company.



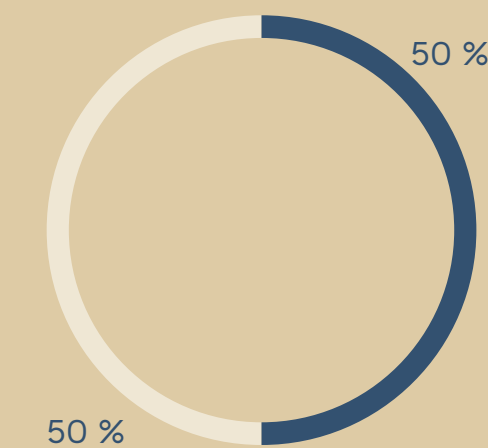
“Our most important value is people. We see the diversity of our teams as a natural part of the environment in which we work together and share responsibility for results. Safe working conditions, work-life balance, and support for employee development are fundamental to the long-term growth and stability of our company.”

**Jana Havlíčková**  
HR Director,  
Preciosa

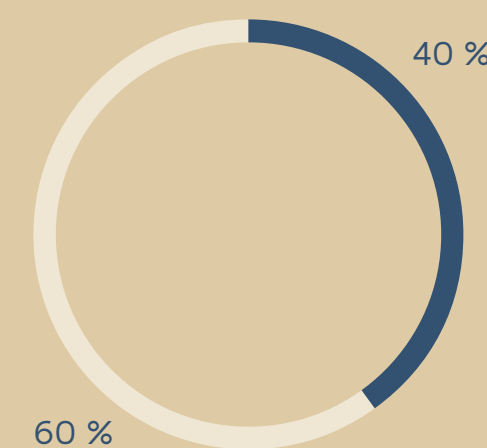
WOMEN AND MEN ACROSS THE COMPANY



WOMEN AND MEN IN MANAGEMENT, SUPERVISORY, AND GOVERNING BODIES



WOMEN AND MEN ON THE BOARD OF DIRECTORS

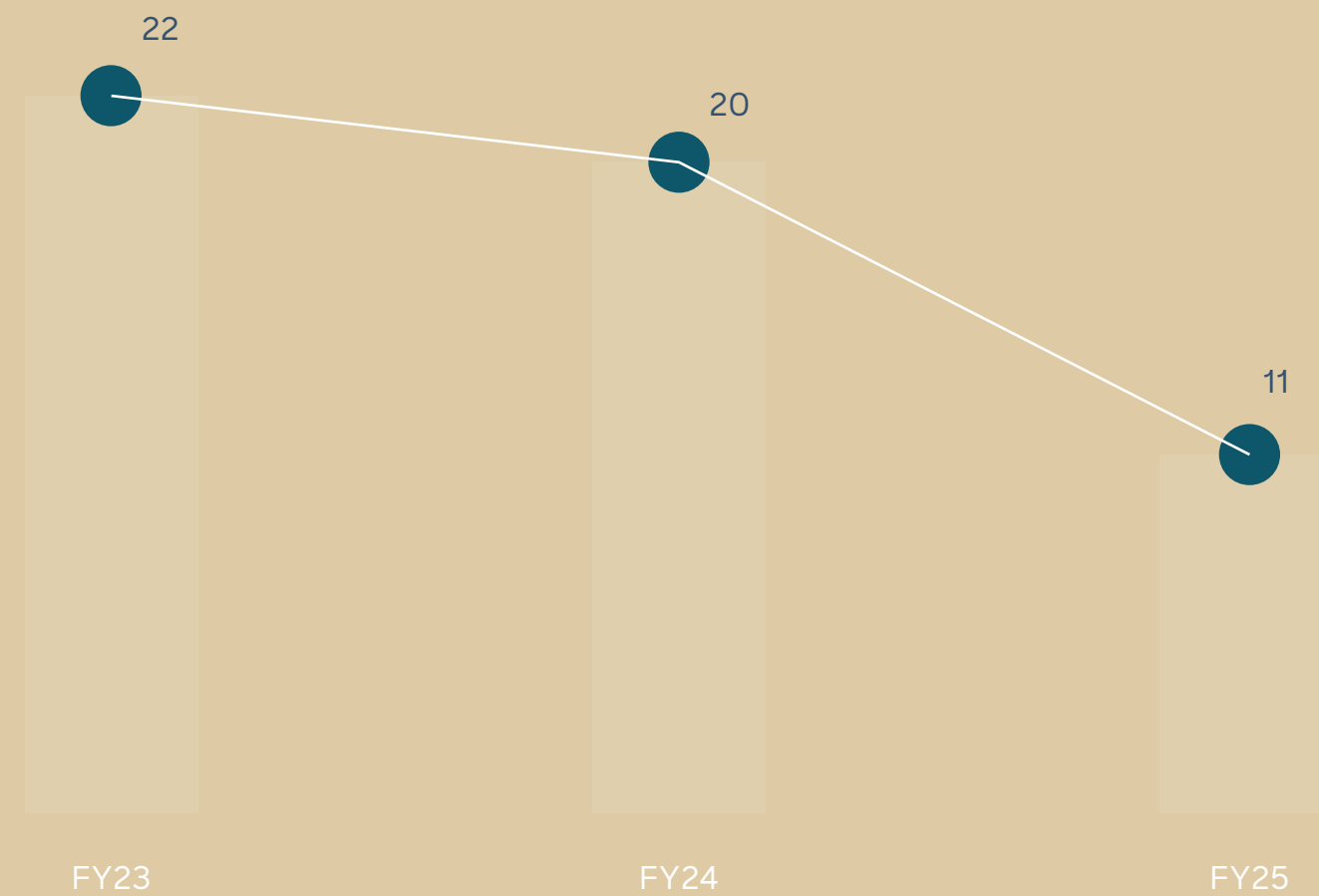


- Women
- Men

Employee unions are an integral part of our company and are viewed as an important partner in social dialogue. We respect employees' right to join trade unions and consider them a legitimate and constructive partner in discussions regarding working conditions, workplace safety, and other areas of employee care.

Our position as a stable and responsible employer is also reflected in repeated recognition as a Most Desired Employer. This award is based on employee voting in high schools and universities across the Czech Republic and provides valuable feedback directly from employees, forming the foundation for further development of corporate culture. We support work-life balance, healthy lifestyles, mental well-being, and equal opportunities both inside and outside the workplace, including through company recreational facilities and activities for employees' families.

NUMBER OF RECORDED WORKPLACE ACCIDENTS



**HOW DO WE ENSURE EQUAL OPPORTUNITIES FOR EVERYONE?**

Since 2017, companies within the Preciosa Group have operated under an ethical code defining our working standards, including equal opportunities, regardless of gender, origin, opinions, or sexual orientation. All employees are introduced to this code during onboarding and training.

**HOW DO WE ENSURE THE SAFETY OF OUR EMPLOYEES?**

Our employees work together with safety technicians to continuously assess potential risks and prevent health hazards. Employees regularly attend occupational health and safety training and occupational health examinations. In FY25, we succeeded in reducing the number of recorded workplace accidents by nearly half compared to FY24. No accidents requiring hospitalization were recorded.

**WHAT BENEFITS DO WE OFFER OUR EMPLOYEES?**

All employees receive subsidized meals and may use company childcare facilities, transportation, accommodation, and recreational benefits. In managerial positions, we also support further education and contribute to personal development activities (business seminars, language courses, etc.).

KEY MESSAGES

During FY25,  
Preciosa:

1

50:50

Achieved a 50:50 representation of women and men in supervisory and management bodies, reaffirming our long-term commitment to fairness, equality, and diversity.

2

45%

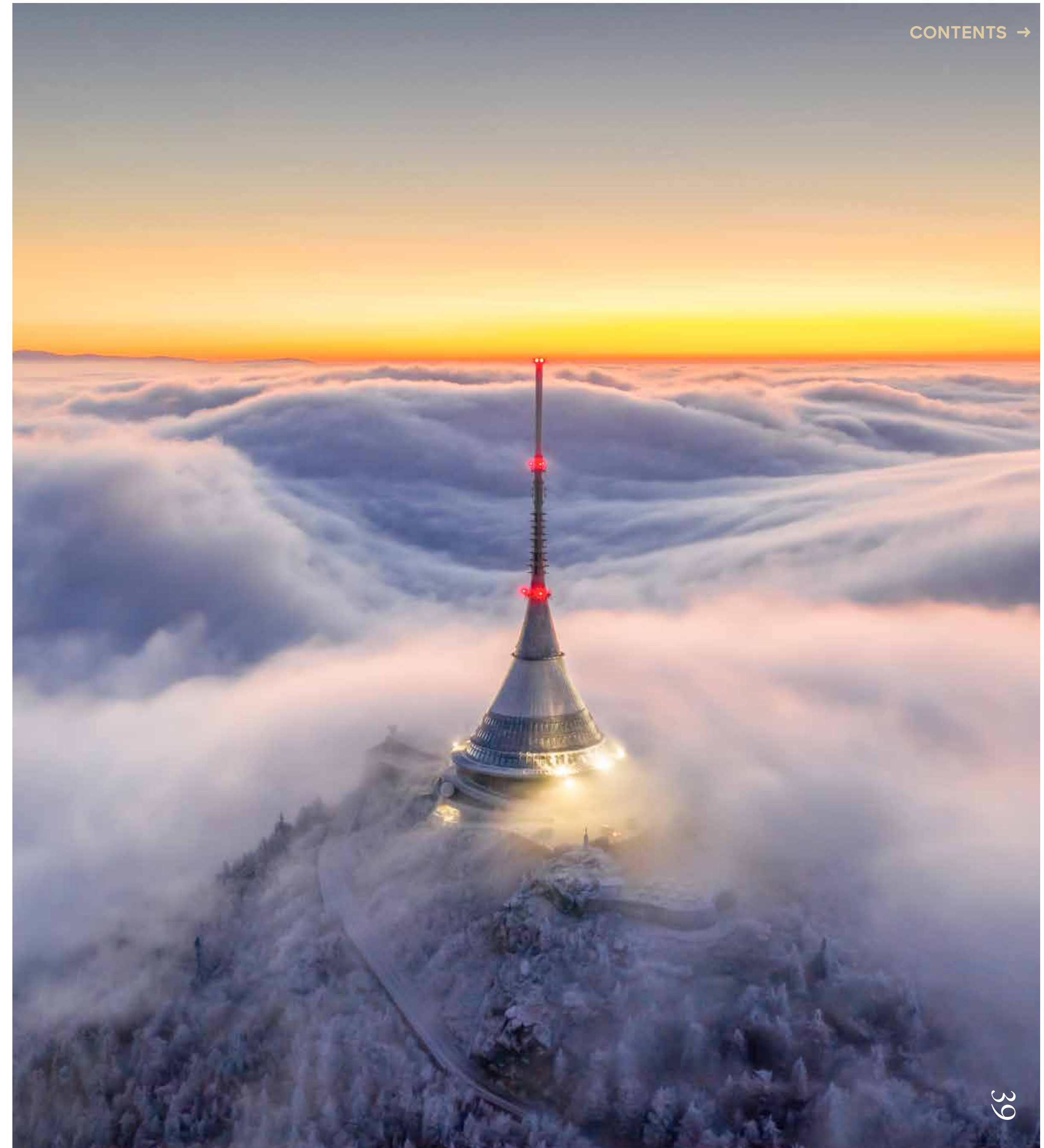
Reduced the number of workplace accidents by 45% compared to the previous fiscal year and expanded internal programs focused on mental well-being and workplace culture, thereby strengthening workplace safety and support for employee well-being.

CHAPTER 6

# Reflection: Crystal Reflected in Society

Preciosa is deeply rooted in the region of Northern Bohemia, where generations have shaped the traditions of glassmaking, specialized know-how, and local communities. For this reason, we do not view responsibility solely in relation to technology, production, and environmental impact, but also toward the people and communities influenced by our company.

As the French writer Romain Rolland once said: “To light the way for others, you must carry the sun within yourself.” We want glassmaking to inspire everyone around us. Just as crystal reflects every beam of light in a unique way, responsibility is reflected in many areas of our business – in the care we provide to our employees and their families, in product safety, and in our support for regional development and social initiatives. All of this expresses our respect for the people, communities, and places from which we come.



# Partnership and Trust

Preciosa's approach to responsibility extends beyond its relationship with the region to the way the company engages with its partners and society as a whole. We view social responsibility as a long-term commitment rather than a one-time initiative. It is an integral part of our corporate culture and everyday practice.

Preciosa is committed to open, fair, and transparent relationships that make the company a reliable and trustworthy partner. Long-term cooperation, the ability to respond to specific customer requirements, and the development of tailor-made solutions are among the key qualities that distinguish the company from its competitors.

Our social responsibility is closely connected to the region in which we operate. We focus on supporting local communities, families, education, and the preservation of glassmaking heritage. For our partners, this is a clear signal that ESG is not merely an obligation for us, but an integral part of our long-term strategy.



“As Creative Director and Head of Marketing at G.S.M. Crystal Emotion, I had the opportunity not only to personally follow the cooperation between our company and Preciosa, but also to witness a long-term partnership built on professionalism, mutual understanding, and trust.

For G.S.M., the choice of partners is part of a broader vision in which material quality, sustainability, and alignment with brand identity contribute to creating long-term value.”

**Gloria Giuliani**  
Creative Director  
and Head of Marketing,  
G.S.M. Crystal Emotion S.r.l.

“Our cooperation with Preciosa gives us complete confidence and peace of mind. We do not need to carry out routine quality inspections because their crystals consistently meet the highest standards. Whether it is a specific request regarding a non-standard shape or brilliance, they are always able to propose a solution. Preciosa is not just a supplier to us – it is a true partner.”

**Ronnie Li**  
Owner,  
Chrisanne Clover Ltd.

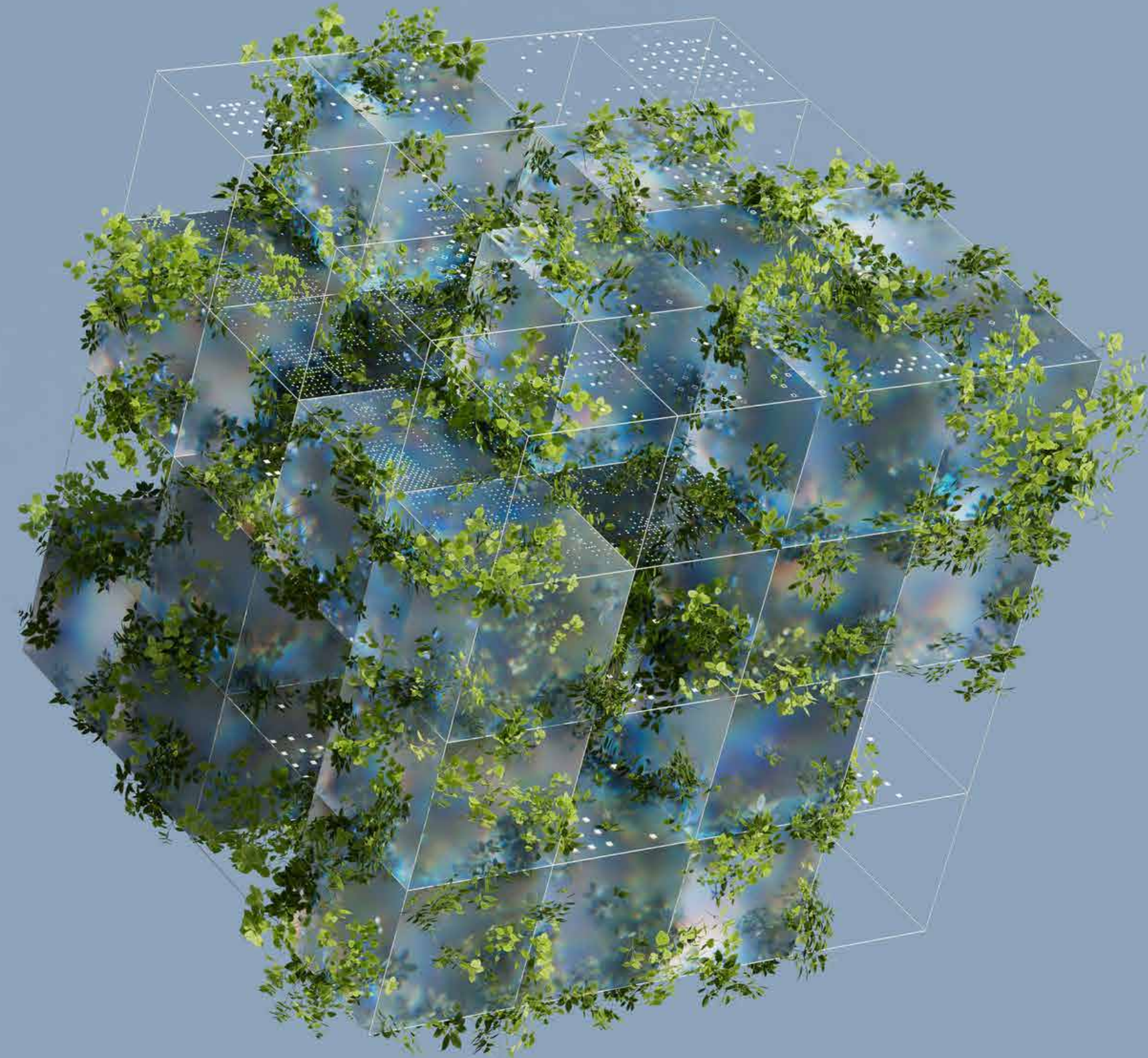
# Responsible Governance

Employees are an integral part of our corporate responsibility. Preciosa places strong emphasis on systematic and transparent governance, compliance, and risk management. Clearly defined processes, responsible leadership, and ethical standards create a solid foundation for stable decision-making. We promote a culture of openness and trust, including the possibility of safely reporting inappropriate conduct in accordance with applicable legislation.

We strive to create a safe and trustworthy working environment that supports communication across all levels of the company. Employees have access to confidential communication channels for reporting concerns, complaints, or suggestions. This approach is supported by our internal ethical code, whistleblowing policy, personal data protection rules (GDPR), and procedures related to the reporting of security incidents. Employees may also participate in the ŠATON innovation program and share their ideas for innovation with colleagues and company management.

Members of our management, supervisory, and governing bodies are long-term employees with extensive experience in their respective roles and strong professional expertise. They contribute to the development of internal guidelines and are regularly informed about applicable legislation and regulations relevant to their organizational units.

At Preciosa, one of the key tools for developing, supporting, and evaluating corporate culture is regular employee performance reviews, which include self-assessment and managerial evaluation. Corporate culture is further strengthened through a broad range of training programs, employee benefits, and company events.



“Reflection is a prerequisite for long-term growth – for individuals as well as for companies. Openness and the ability to acknowledge progress and limitations are, in our view, the foundation of trust and an essential step toward responsible and sustainable business.

Responsibility for us is not merely a matter of formal reporting, but a long-term approach to how we conduct business – from employee care and fair remuneration to support for education and environmental protection. We believe this very approach forms the basis of Preciosa’s future stability.”

**Jan Štiller, MBA**  
CEO,  
Preciosa

# Organizational Structure

Preciosa's organizational structure consists of:

- The Board of Directors, whose role is to provide the company's executive management.
- The Supervisory Board, responsible for internal oversight, supervision of the Board of Directors' activities, and the exercise of control functions within the company.
- The Chief Executive Officer, who, among other responsibilities, oversees the implementation of all documents approved by the Board of Directors into specific management directives, including their substantive and time-based execution.
- Department Directors reporting to the Chief Executive Officer and responsible for developing and implementing strategies within their respective areas, managing processes and risks, fulfilling quality and environmental policy objectives, ensuring personnel management, efficient use of resources, and compliance with legal regulations.



## Regional Support and Social Responsibility

Our social responsibility is closely connected to the region in which we operate. Through the Preciosa Foundation, we focus on supporting local communities, families, education, and the preservation of glassmaking cultural heritage. Through individual foundation programs, we support projects in the fields of education, social and healthcare services, sports, and the arts. Since its establishment in 1993 as the first corporate foundation in the Czech Republic, the Preciosa Foundation has supported projects and charitable organizations with a total value exceeding CZK 330 million, primarily in the Liberec Region. We consider this long-term approach essential to preserving glassmaking traditions and maintaining quality of life in the region.

Preciosa also develops long-term programs for students and young talents, supports professional internships, university projects, and scientific research in the field of glassmaking and related disciplines. These activities include the Master of Crystal design competition, the Crystal Valley summer program in Kamenický Šenov, and cooperation with the Museum of Glass and Jewelry in the Czech Republic. We also support the work of fashion students at some of the world's top universities through our deadstock "RE/nventory" initiative.

In addition, we support employee volunteer activities, offering compensation for time dedicated to volunteering, including wage compensation, additional leave, or tax advantages related to financial donations. The Foundation also provides financial assistance to employees facing difficult life situations.

330  
mil. CZK

We have supported projects and charitable organizations with a total value exceeding CZK 330 million.

## WHERE THE PRECIOSA FOUNDATION PROVIDES SUPPORT

### EDUCATION FUND

Supports students from elementary schools to universities in the fields of materials science and scholarships, including social scholarships, as well as through awards for outstanding scientific work and the Master of Crystal competition.

### SOCIAL FUND

Focused on supporting people with disabilities or individuals in urgent need. It also supports the Liberec hospice, schools for children with physical disabilities, and senior care homes throughout the region.

### CULTURE AND ARTS FUND

Primarily supports regional interest groups and associations in the realization of cultural projects – from glassmaking craft traditions and jewelry to the renovation of the Hejnice Madonna pilgrimage site, historic chandeliers in local churches and basilicas, and the expansion of the Liberec Zoo.

### HEALTH FUND

Supports healthcare institutions throughout the region. It finances preventive programs for employees and contributes to medical care not covered by health insurance providers.

### SPORTS FUND

Focuses primarily on local sports organizations and leisure activities for children and youth, as well as football and hockey clubs in smaller municipalities and disadvantaged areas of the region. The Foundation has also supported projects such as wheelchair basketball in Bedrichov and the Cesta za snem para-cycling marathon.

### CRYSTAL GIFTS

Sports and cultural projects are additionally supported through crystal medals, cups, and trophies.



“Preciosa operates in a region where glassmaking traditions have been continuously developed for almost 500 years and are now inseparably connected with everyday work and life in local communities. This reality carries deep economic value and results. At the same time, we perceive a strong commitment toward employees and the places where our business activities take place.”

**Andrea Kroupová**  
Director of the Preciosa Foundation

CASE STUDY

### Preciosa RE/nventory Deadstock Initiative

Crystals with slight variations in size or shade, together with materials from older stock inventories that would otherwise be discarded, are incorporated into the RE/nventory project. Through this initiative, we give these materials a second life by providing them to universities and design students who would not otherwise have access to them. In this way, we support creative development, reduce waste, and strengthen the circular use of materials.

” Preciosa continuously develops programs for students and young talents, supports professional internships, university projects, and scientific research in the field of glassmaking and related disciplines.

COLLABORATION

As part of the project, we cooperate not only with students but also with Czech designer Zuzana Kubičková.



## KEY MESSAGES

## During FY25, Preciosa:

1

Strengthened its position as an open, fair, and trustworthy partner for customers and suppliers while maintaining a stable framework of governance, compliance, and risk management as the foundation of long-term trust.

2

### Community

Developed its social responsibility activities through the support of regional communities, education, and cultural initiatives.

3

Continued supporting projects and charitable organizations, with total contributions exceeding CZK 330 million since the Foundation's establishment. Of this amount, CZK 70 million was allocated to regional schools and educational programs focused on glassmaking, thereby contributing to the development of a new generation of glassmaking professionals.

4

Supported employee involvement in volunteer and charitable activities, with employees participating in nearly all Foundation initiatives across the region during FY25, including approximately 35 public fundraising events.

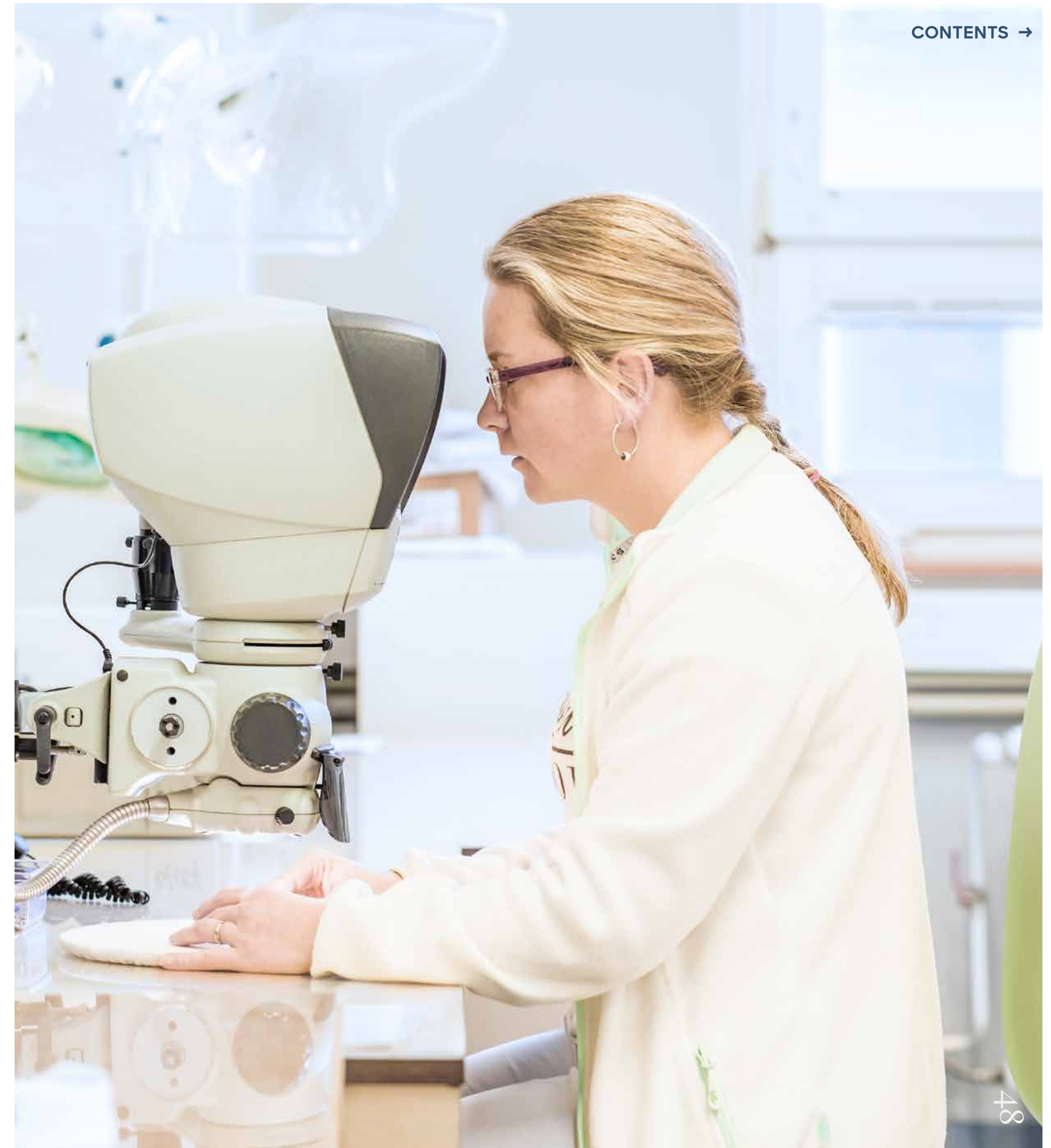
CHAPTER 7

# Appendix: Crystal Endures

In glassmaking, details matter. Before crystal reveals its brilliance in the final product, it undergoes testing and strict quality control – it must withstand even the closest scrutiny. We apply the same principle to ESG.

This Appendix presents the standards, methodologies, and verifiable frameworks that give our approach a clear structure. It is intended for partners, auditors, regulators, and everyone who wishes to look beneath the surface of our work.

” ” The ability to reference internationally recognized standards is essential for the reporting of our partners facing increasing stakeholder and regulatory requirements. It provides them with time savings, greater confidence in decision-making, and a stronger position toward customers.



## CERTIFICATIONS, STANDARDS, AND METHODOLOGIES

Preciosa builds its long-term responsibility on respect for internationally recognized standards. These frameworks serve not only as control mechanisms, but also as a common language for communication with business partners who incorporate them into their own ESG reporting.

During FY25, the company complied in particular with the following standards and certifications:

### ISO 9001

A quality management system focused on consistent product quality and customer satisfaction.

### ISO 14001\*

An environmental management system supporting the management of environmental impacts and activities affecting the environment.

### REACH

European regulation governing the registration, evaluation, authorization, and restriction of chemicals to ensure their safe use.

### RoHS

European directive restricting the use of selected hazardous substances in electrical and electronic equipment.

### ASTM F2923

American safety standard for children’s jewelry defining requirements for design, testing, and labeling in order to minimize risks associated with jewelry intended for children up to 12 years of age.

### ASTM F963

American toy safety standard specifying requirements for the mechanical, physical, and chemical properties of toys intended for children up to 14 years of age.

### CPSC 16 CFR 1303

Regulation of the U.S. Consumer Product Safety Commission (CPSC) prohibiting paints and surface coatings with a lead content exceeding 0.009% by weight.

### CPSIA

U.S. legislation focused on the safety of consumer products, particularly products intended for children, including restrictions on hazardous substances and mandatory testing requirements.

### OEKO-TEX® Standard 100

An internationally recognized testing and certification system for textiles confirming that all parts of a final product have been tested and do not contain harmful substances exceeding established limits.

### Safety of Toys

Compliance with the requirements of the EU Toy Safety Directive (2009/48/EC), which establishes safety, chemical, and mechanical requirements for toys intended for children.

\*ISO 14001 applies only to Preciosa Machinery

# Certifications as a Tool of Trust

At Preciosa, certifications are not perceived as a one-time audit, but as a living process involving cooperation between production, research, quality management, and external auditors. Regular inspections verify compliance with standards while also confirming our ability to respond to changing requirements from regulators and customers. Certifications therefore serve as a tool for continuous improvement rather than a mere administrative formality.

From the perspective of our business partners, ESG methodologies, certifications, and standards represent far more than formal documentation – they are a guarantee of credibility and predictability.

The ability to reference internationally recognized standards is essential for partners facing increasing stakeholder and regulatory reporting requirements. Transparent ESG data from Preciosa, together with regular customer testing and audits described in Chapter 3, simplify due diligence processes (verification) and minimize risks within the supply chain.

For partners, this means time savings, greater confidence in decision-making, and a stronger market position. Preciosa's ESG approach therefore delivers not only shared values, but also a concrete business advantage – trust in long-term cooperation and a stable foundation for future growth.



“Standards and certifications are not goals in themselves. They are tools that enable us to systematically manage risks, improve quality, and provide partners with confidence that our claims are verifiable.”

**Marek Kinazs**  
Quality Director,  
Preciosa

# List of Abbreviations (Alphabetical Order)

**3TG**

Tin, Tungsten, Tantalum, Gold (conflict minerals whose extraction may be linked to the financing of armed conflicts)

**ASTM**

American Society for Testing and Materials (organization developing technical standards and norms)

**CEO**

Chief Executive Office

**CFR**

Code of Federal Regulations (collection of federal regulations of the USA)

**CMRT**

Conflict Minerals Reporting Template

**CO<sub>2</sub>**

Carbon dioxide

**CO<sub>2</sub>e**

Carbon dioxide equivalent

**CPSC**

Consumer Product Safety Commission (U.S.)

**CSRD**

Corporate Sustainability Reporting Directive (EU)

**C-TPAT**

Customs-Trade Partnership Against Terrorism (U.S. supply chain security program)

**DMA**

Double Materiality Assessment

**ESG**

Environmental, Social and Governance

**EU**

European Union

**FY**

Fiscal year

**GDPR**

General Data Protection Regulation

**GHG**

Greenhouse gas (in the context of the “GHG Protocol”)

**GWP**

Global Warming Potential

**HR**

Human Resources

**IROs**

Impacts, Risks and Opportunities

**MBA**

Master of Business Administration (postgraduate managerial degree focused on management knowledge)

**Preciosa**

Abbreviated designation of PRECIOSA, a.s. used in this report

**R&D**

Research and Development

**RMI**

Responsible Minerals Initiative (initiative for responsible sourcing of minerals)

**SEDEX**

Supplier Ethical Data Exchange (platform for sharing data on ethics and sustainability in the supply chain)

**SMETA**

Sedex Members Ethical Trade Audit (Sedex audit methodology)

# Next Steps

This report represents an important step in our journey, not its final destination. We are working on a comprehensive ESG strategy that connects certifications, responsible governance, and further investments in people, technology, and the region. Our ambition is continuous improvement and an open dialogue about the direction we are taking together. Because in business, just as in crystal, one principle applies: what withstands scrutiny in detail will endure as a whole.



## CONTACT INFORMATION

Additional information and documentation can be found on our website:  
<https://www.preciosacomponents.com>



PRECIOSA